

PROGRESS ON AUSTRALIAN /NEW ZEALAND STANDARD FOR BAR CHAIRS

A working group of Standards Committee BD-084 has been meeting and communicating to progress a draft of “AS/NZS 2425 Bar Chairs in Reinforced Concrete.”

The project, initiated by SRIA, has received strong support from Manufacturers and users of bar chairs through the working group and main Committee.

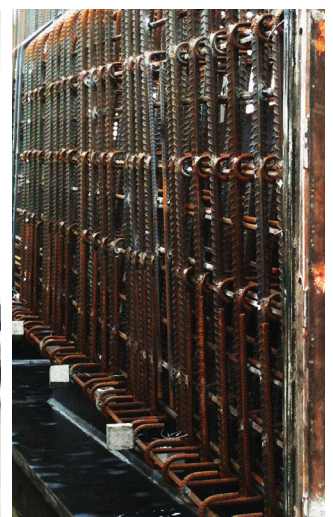
The working group recognises that the key to durable reinforced concrete is cover, compaction and curing. The correct selection and use of an appropriate bar chair is critical to this outcome. Therefore the draft focuses on key attributes such as:

- Strength to support reinforcement and construction loads.
- Deflection to ensure that reinforcement placement stays within the tolerances specified in the design standards (AS 3600 and NZS 3101 especially).
- Ability to allow concrete to be placed and compacted around the chairs.
- For concrete bar chairs, a reverse chloride penetration requirement to ensure that the chair is not the weak link in maintaining durability.
- For protective-tipped wire bar chairs, ensuring that the wire does not penetrate the protective coating.
- For plastic chairs, ensuring their stability under elevated temperatures.

After reviewing the initial draft and comparing it with other Standards for bar chairs including BS 7973.1, the working group has proposed the inclusion of continuous bar chairs and non vertical load-bearing spacers, as they are significant components of modern reinforced concrete construction.

Best practice on placement and fixing appears to be covered well by product literature but the Committee did not exclude a future project to address this issue.

Standards Australia is now preparing the draft for Public Review. SRIA welcomes input and comment on this draft Standard. The draft will be available for download from the Standards Australia web site shortly.





Steel Reinforcement
Institute of Australia

SERVICES SRIA PROVIDES

Publications: Written by experts in design, specification and construction SRIA publications are designed specifically for use by practicing engineers, architects, builders and government. Most are provided free of charge and can be downloaded from the website.

Technical support: A comprehensive technical advice service is available to the construction industry on the design and use of reinforcing steel in concrete. Activities are coordinated from the National Office in Sydney where professional staff respond to technical enquiries. Further specialised support is accessible through a broad network of experts.

Office seminars: SRIA staff regularly visit consulting engineers, specifiers and builders to discuss industry issues, projects and to further develop knowledge on the use of steel reinforcement and construction methods. Free in-house lectures are available on request.

Special research: Recent SRIA research projects include reinforcement bond tests and an extensive testing program for Class L mesh slabs. This important research is bringing the latest information and design requirements to practitioners.

Industry leadership: SRIA staff present technical papers at major national and international conferences on the latest advances in the use of steel-reinforced concrete. Copies of SRIA papers and presentations are on the website.

Professional development: As part of its commitment to the future of Australia's building industry, the SRIA lectures at universities providing up-to-date design and specification materials free of charge to over 3,000 students every year.

Awarding excellence: The SRIA presents annual Undergraduate Award for Excellence in Reinforced Concrete Design. This is a cash prize for the student who gains the highest mark in the subject in which the SRIA lecture is delivered.

Industry linkage: The SRIA works collaboratively with like associations to develop areas supporting design, education and market development.

Australian Standards: The SRIA is committed to modern easy-to-use design standards for steel-reinforced concrete construction in Australia. The SRIA contributes to all related Australian Standards committees. SRIA staff will assist with queries regarding the interpretation of these standards.

For further information the SRIA can be contacted through its national office:

Executive Director: Scott Munter

t	02 9499 2152	Grd Flr, 71 Ridge St
f	02 9499 9471	Gordon NSW 2072
m	0400 929 747	PO Box 418
e	info@sria.com.au	Roseville NSW 2069

SRIA REGISTRATION FORM

To keep informed of the most recent industry developments, releases and presentations on steel reinforcement and to maintain your professional development register now for the new SRIA website database. Your details will remain highly confidential and we will ensure your reinforcement knowledge remains up-to-date.

You may register online at
www.sria.com.au/registration.html

or fill out your details below :

Title: Mr Mrs Ms Dr

First name: _____

Last name: _____

Position: _____

Company: _____

Postal address: _____

Phone number (work): _____

Mobile Phone number : _____

Email: _____

and email, fax or post your details to SRIA National Office:

Post: PO Box 418 Roseville NSW 2069

Fax: 02 9499 9471

Email: info@sria.com.au

Privacy statement:

SRIA will only collect information that is necessary for communication. By submitting your contact details you agree that the measures that SRIA take with respect to privacy and the disclosure of information as expressed in the privacy statement on the SRIA website are reasonable and that you consent to the scope of the disclosure being proposed.