

Procurement of Construction Products

A guide to achieving compliance

2ND EDITION

Australasian Procurement and Construction Council ©

This work is copyright. Apart from any use permitted under the Copyright Act 1968, no part may be reproduced by any process without the prior written permission of the Australasian Procurement and Construction Council.

ISBN: 978-0-9925423-1-3

Suite D, 2 Geils Court

DEAKIN ACT 2600

Phone: +61 2 6285 2255

Fax: +61 2 6282 3787

Email: info@apcc.gov.au

Website: <http://www.apcc.gov.au>

Contents

1	Introduction	5
1.1	Purpose of the Guide	5
1.2	Context	6
1.3	Scope of the Guide	7
1.3.1	Exclusions	7
1.4	Who Should Use this Guide?	7
1.5	Abbreviations	7
1.6	Reviewing the Guide	7
2	Principles for Procurement and Conformance of Construction Products	8
3	The Regulatory Environment	10
3.1	Overview	10
3.2	Planning and Building Legislation	11
3.2.1	National Construction Code	11
3.3	Plumbing Legislation	15
3.4	Electrical Legislation	15
3.5	Work Health and Safety Legislation	15
3.6	Other Legal and Statutory Obligations	16
3.6.1	Statutory Warranties	16
3.6.2	Contractual Agreements	16
3.6.3	Supply and Install Contracts	17
3.6.4	Installation of Supplied Products	17
4	Standards and Conformance	18
4.1	What is Product Conformity and Conformity Assessment?	18
4.2	Which Bodies Support Conformity Assessment Processes?	18
4.2.1	Joint Accreditation System of Australia and New Zealand	19
4.2.2	National Association of Testing Authorities, Australia	19
4.2.3	National Measurement Institute	19
4.2.4	Standards Australia	19
4.2.5	International conformity assessment frameworks	20
4.3	What Conformity Assessment Paths are Available?	20
4.3.1	Testing	20
4.3.2	Inspection	21
4.3.3	Product Certification	22
4.3.4	Quality Management Systems (QMS) Certification	22
4.4	Supplier Declaration of Conformity (SDoC)	22
5	Determining Whether a Product is Fit for Purpose	23
5.1	What is Fitness for Purpose?	23
5.2	Making Decisions about Fitness for Purpose	24
6	Selecting the Appropriate Conformity Assessment Path	26
6.1	Overview	26
6.2	Which Conformity Assessment Path is Correct?	28
6.2.1	Risk Assessment	28
6.2.2	Product Types and Characteristics	29
6.3	Existing Conformity Assessment Schemes and Guides	29
6.3.1	Industry-Supported Schemes and Guides	29
6.3.2	Products not covered by Industry-Supported Schemes	30
6.3.3	Conformity Assessment Bodies	30
6.4	What Level of Evidence is Appropriate?	30
6.4.1	Verification, Certification and Reports	30
6.4.2	Product Marking	31
Appendix 1	Guide to Industry Conformity Assessment Schemes and Information	30
	Context	30
	Index	31

Acknowledgements

This Guide was developed by the Construction Product Quality Working Group (CPQWG), on behalf of the Australasian Procurement and Construction Council (APCC). The 2013 working group comprised representatives from the following bodies:

- Ash Development Association of Australia (ADAA)
- Australasian Certification Authority for Reinforcing and Structural Steels (ACRS)
- Australasian Procurement and Construction Council (APCC)
- Australian Building Codes Board (ABCB)
- Australian Construction Industry Forum (ACIF)
- Australian Constructors Association (ACA)
- Australian Engineered Fasteners and Anchors Council (AEFAC)
- Australian Institute of Architects (AIA)
- Australian Institute of Building (AIB)
- Australian Institute of Building Surveyors (AIBS)
- Australian Steel Institute (ASI)
- Australian Technical Infrastructure Committee (ATIC)
- Australian Window Association (AWA)
- Building Products Innovation Council (BPIC)
- Cement Concrete and Aggregates Australia (CCAA)
- Engineered Wood Products Association of Australasia (EWPA)
- Fire Protection Association Australia (FPAA)
- Housing Industry Association (HIA)
- Joint Accreditation System of Australia and New Zealand (JAS-ANZ)
- Master Builders Australia (MBA)
- National Association of Testing Authorities, Australia (NATA)
- Plastics Industry Pipe Association of Australia Limited (PIPA)
- Standards Australia (SA)
- Steel Reinforcement Institute of Australia (SRIA)
- The Australian Industry Group (Ai Group)
- VicRoads.

The following organisations support the Guide and have contributed to the Guide:

- Airconditioning & Mechanical Contractors Association (AMCA)
- Amorphous Silica Association of Australia (ASiAA)
- Australasian (iron & steel) Slag Association (ASA)
- Commonwealth Scientific and Industrial Research Organisation (CSIRO)
- Concrete Masonry Association of Australia (CMAA)
- Consult Australia (CA)
- Glue Laminated Timber Association of Australia
- Insulated Australasia
- Insulated Panel Council Australasia Limited (IPCA)
- Lighting Council of Australia
- Roofing Tile Association of Australia (RTAA)
- Think Brick
- Vinyl Council of Australia.

On behalf of the APCC, I wish to acknowledge the support from all representative bodies and express my particular appreciation to the following individuals for their invaluable contribution to this project and assistance in writing this Guide.

Kristin Brookfield (HIA)

Michael Fraser (NATA)

Peter Lee (JAS-ANZ)

Peter Key (ASI)

Tracey Gramlick (AWA)

Ken Pearson (ATIC)

Richard Calver (MBA)

Richard Hamber (AWA)

Jennifer Evans (NATA)

Richard Barton (AIA)

Thank you most sincerely, Jane Montgomery-Hribar

APCC and Chair, Construction Product Quality Working Group

1 Introduction

1.1 Purpose of the Guide

The Australian construction industry operates in a global marketplace and utilises a vast, increasingly complex and innovative range of construction products¹ – many of which are manufactured overseas.

As there are hundreds of thousands of building and construction products on the market – produced both domestically and internationally – it is extremely difficult to ascertain whether or not they all comply with the National Construction Code (NCC) and/or conform to the requirements of the relevant Australian or international standards, where they exist.

The compliance and durability of construction products are major risk factors which need to be managed as they impact significantly on the service life and quality of building and construction projects.

Evidence suggests that the market penetration of non-conforming products in several key construction product sectors in Australia may be up to 50%². This is a sobering and alarming statistic.

In Australia, there have been numerous instances in which non-compliant construction products have caused failure or damage to buildings, such as the collapse of buildings and motorway signs, and failure of key building elements, such as glass panels, steel fixings and more.

The most concerning consequence of construction product failure is its impact on safety. In the most extreme cases, such failure can lead to serious injury or loss of life. The potential risks to the community and construction industry workers are immeasurable and should not be underestimated. Without doubt, the use of faulty construction products puts lives at risk.

It is, therefore, vital that the industry works together to create an environment in which all stakeholders in the building and construction process, including the community, are confident that construction products meet a minimum acceptable level of quality and compliance, and are fit for the purposes for which they are intended.

It is important to understand the responsibility to determine whether or not a construction product is fit for its intended purpose and the profound consequences in the event that the product is found to be defective. However, the procurement of construction products has become increasingly complex, and information and guidance to assist the procurement process is scarce. In particular, for many 'safety critical' products, there is often a lack of credible and accurate information available in Australia to assist stakeholders involved in construction projects to verify construction product compliance and conformance, in order to determine whether or not a product is fit-for-purpose.

This Guide seeks to assist in the decision-making processes for the procurement of construction products in Australia, with a view to elevating levels of compliance and providing a level of confidence to all parties in the supply chain.

¹ In this Guide, the term 'product' also includes materials (and vice versa), unless otherwise stated.

² The Australian Industry Group, *The quest for a level playing field, The non-conforming building product dilemma*, 2013.

Appendix 1 provides examples of a number of conformity assessment schemes or guides. By its nature, Appendix 1 is dynamic and will change, therefore it is designed to be updated regularly. Reference should be made to the appropriate industry associations and conformity assessment bodies for that particular product sector and other references provided in Appendix 1 for the most up-to-date information for particular products. For an up-to-date listing of accredited conformity assessment bodies, readers are advised to consult the JAS-ANZ Register (www.jas-anz.org/register) and the NATA website (www.nata.com.au).

1.2 Context

Productivity in the construction industry is critical to Australia's growth and the economy. The building and construction industry accounts for 7.8% of Australia's gross domestic product (GDP), and employs 9.1% of the workforce. The industry contributed \$99.4 billion to the Australian economy in the 2011–12 financial year.

At the end of June 2012, the building and construction industry generated \$305 billion in total income, incurred \$275.4 billion in total expenditure, and employed 950,000 persons³. Construction products are estimated to comprise 30% of project costs; therefore, approximately \$82.62 billion dollars was spent on their procurement in 2011–12.

Reports⁴ indicate the costs associated with rework can be a significant portion of the profit margin of a project. One major builder estimated the average cost of rework due to non-conforming products was between 0.25% and 2.5% of the overall contract value. The industry is characterised by profit margins between 3% and 12%, and company insurance does not cover product failure and rework costs. A specific rework case to replace plastic water pipes in a high-rise residential development will cost a builder \$3 million (2%) on a project valued at \$150 million. The “leaky homes” crisis in New Zealand has been estimated to cost NZ \$11.3 billion⁵ in repairs and replacement costs, which could have been avoided.

Lower productivity in the construction industry leads to higher construction costs and prices. As both the private and government sectors are significant users of commercial building and engineering construction, these cost increases are borne across the economy, flowing through to households in the form of higher consumer prices. As Australia's population continues to grow and age, and with fewer people paying taxes, the resultant effect of ongoing lower productivity will be a huge impost for the Australian economy.

As construction products are the key components of building and construction projects, their durability is significantly impacted by their quality which, in turn, impacts on the lifespan of buildings and infrastructure assets. Replacement costs and environmental impacts can be profound if the life expectancy of building and construction assets is compromised or reduced. Furthermore, the reliable performance of building products is critical to achieving the safety objectives established by all Australian and New Zealand governments for the community and to meet community expectations for safety.

The normal design life of a building or infrastructure asset is regarded as 50 years. However, for specific projects, the design life can be as long as 100 to 150 years. The durability of a building and its components in their environment should be such that it remains fit for use throughout its design life (provided it is appropriately maintained).

It is also important to recognise that sustainability is now a key element in achieving business success in the construction industry.

Clients want to see sustainable outcomes for their projects, the supply chain needs to compete profitably and on a level playing field, and the community expects that the industry will deliver project outcomes that have due regard for the environment and other related factors. The industry itself needs to operate in a sustainable way to ensure a safe construction environment, maintain profitability, increase employment and productivity while providing economic benefits to the nation.

The development and use of sustainable construction products is a key factor in achieving the deliverables expected by all industry stakeholders.

3 Australian Bureau of Statistics, 27 June 2013.

4 The Australian Industry Group, *The quest for a level playing field, The non-conforming building products dilemma*, 2013

5 *The New Zealand Herald*, 22 December 2009, “Leaky homes will cost \$11.3 b to fix – report”.

1.3 Scope of the Guide

This Guide aims to assist procurers gain a more informed understanding and exercise improved decision-making with respect to the procurement of construction products. As the quality and performance of construction products is critical in providing certainty and assurance to building and construction quality, durability and longevity, and ensuring safety, understanding these performance expectations is an essential precursor to an effective procurement process.

By assisting readers to understand the current environment in Australia with respect to construction product conformity and conformance assessment, the Guide is intended to reduce confusion and provide greater clarity for all stakeholders involved in building and construction project delivery. In the absence of regulatory guidance, or where an industry specific issue is not addressed by this Guide, the recommendations of the relevant recognised Australian industry body for a particular product sector should be considered. This Guide provides assistance in this regard by including relevant references, where appropriate.

1.3.1 Exclusions

The Guide is not intended to provide a comprehensive manual for the procurement of construction products.

Additionally, the Guide is not designed to address the issues of forgery, counterfeit goods, counterfeit certification, falsified marks, reports, certificates, misleading claims (without evidence) and misrepresentation. These are matters addressed by a range of existing Australian laws. Procurers who encounter these issues should pursue these matters through the relevant legal avenues.

1.4 Who Should Use this Guide?

This Guide has been prepared to assist architects, engineers, building designers, specifiers, procurers, builders, project managers, contractors, sub-contractors, building surveyors, certifiers and asset and building owners.

For the purposes of this Guide, all such entities are referred to as 'procurers', unless otherwise stated.

1.5 Abbreviations

The following abbreviations and acronyms are used in this Guide.

ABCB	Australian Building Codes Board
ACL	Australian Consumer Law, which for the purpose of this Guide includes State and Territory fair trading and similar legislation
ACM	Acceptable Construction Manual
ACP	Acceptable Construction Practice
BCA	Building Code of Australia
EESS	Electrical Equipment Safety System
ERAC	Electrical Regulatory Authorities Council
JAS-ANZ	Joint Accreditation System of Australia and New Zealand
NATA	National Association of Testing Authorities, Australia
NCC	National Construction Code (published by the Australian Building Codes Board) comprising the Building Code of Australia, Volume One and Two; and the Plumbing Code of Australia, as Volume Three
PCA	Plumbing Code of Australia
SA	Standards Australia

1.6 Reviewing the Guide

The first edition of this Guide was published on 1 September 2014. To recognise the ongoing development of approaches to construction product certification by both government and industry stakeholders, the APCC and the members of the CPQWG agreed to undertake a review of the Guide from time to time.

The second edition of this Guide, published online, was released on 1 December 2015.

2 Principles for Procurement and Conformance of Construction Products

The following principles have been developed to guide procurers on matters relating to the conformance of construction products. By applying all of these principles to their decision-making, procurers can help to ensure the products they select meet the appropriate standards and are fit for purpose.

- **Principle 1:**

All relevant legislation must be complied with including, but not limited to, building, workplace health and safety, and consumer laws.

- **Principle 2:**

Contract documentation should clearly specify product standards and the required evidence of conformity. Product standards should refer to relevant Australian Standards. Where there are no relevant Australian Standards, relevant international standards or authoritative industry sources should be utilised.

- **Principle 3:**

All construction products procured should conform to the requirements in the contract documentation.

- **Principle 4:**

The selection of the required evidence of conformity should be based on the intended use and risk exposure (likelihood and consequence of failure) of each construction product.

- **Principle 5:**

Construction product conformity requirements should refer to relevant Australian Standards. Where there are no relevant Australian Standards, appropriate international standards or authoritative industry sources should be utilised.

- **Principle 6:**

Evidence of construction products meeting specified standards should be demonstrated by conformity assessment including, but not limited to, product certification, testing or inspection, as set out in the contract documents.

- **Principle 7:**

Evidence of the source of construction products and their authenticity should be obtained and retained.

- **Principle 8:**

Project managers should obtain and retain contemporary and credible documentary evidence to demonstrate conformity of all construction products.

- **Principle 9:**

Responsibility for managing conformity assessment outcomes at each stage of the project should be appropriately allocated in the contract documentation.

- **Principle 10:**

Where third party conformity assessment bodies are relied upon to provide evidence of conformity, they should be accredited by:

- Joint Accreditation System of Australia and New Zealand (JAS-ANZ) – for product certification, management systems, certification and inspection bodies
- National Association of Testing Authorities, Australia (NATA) – for testing and calibration laboratories and inspection bodies
- Accreditation bodies that are signatories to relevant international multilateral/mutual recognition arrangements and have the relevant scope associated with the conformity assessment activity.

- **Principle 11:**

Where construction products are supplied without required evidence of conformity, or where doubt exists about product conformity, product testing to an appropriate level may assist in ascertaining construction product quality.

- **Principle 12:**

Without adequate evidence of product conformity, the product should not be used in construction.

3 The Regulatory Environment

Summary

- All building work in Australia is subject to meeting the performance requirements in the National Construction Code (NCC) which sets out the minimum standards for a broad range of building products and systems.
- The NCC has legal effect through its reference in State and Territory Building Acts and Regulations.
- The NCC seeks to quantify risk through the process of assessing compliance to a set of performance requirements for buildings.
- The NCC calls up 'referenced documents' such as Australian Standards and some industry developed standards to provide technical details for the performance of construction products.
- The NCC provides guidance about the types of evidence that can be used to show that a building product meets the minimum standards. The NCC is a performance-based document, however, in many cases the prescriptive provisions of the NCC refers to specific Australian, international or industry standards which provide greater detail about the minimum level of performance required.
- Construction work not covered by the NCC, such as infrastructure and unique structures, are subject to the standards nominated by the relevant designer/engineers and contract documentation.
- In all cases, the relevant designer/engineer should nominate, through plans and specifications, those standards that must be met by the construction products used. The relevant designer/engineer should also specify what level of evidence should be accepted as proof that a building product meets the specified standard.
- In addition to the NCC and contractual responsibilities, the Australian workplace health and safety laws set out additional responsibilities for various types of procurers (e.g. designers, builders and all associated contractors and workers) with respect to product conformance and safety.

3.1 Overview

The standards for the performance of products used in building work across Australia are set out within the legal framework of State and Territory legislation relating to building, planning, plumbing, electrical work, and workplace health and safety.

In addition to these requirements, the Australian Consumer Law (ACL) guarantees that construction works and services must be provided with due care and skill within a reasonable time.

Under the ACL, there are also obligations for parties in the supply chain to deliver to the customer (in this case, a building owner) a finished product that is fit-for-purpose. However, Section 61(4) of the ACL provides that the statutory guarantee as to fitness for particular purpose does not apply where there has been a supply of professional services by a qualified architect or engineer.

3.2 Planning and Building Legislation

State and Territory planning and building legislation:

- establishes the requirements for obtaining building approvals for certain building work
- sets out the requirements for building work that may not require approval
- references the NCC, including State and Territory variations, which describe the technical standards for building work, including by direct reference to the building products used in construction
- establishes the legal basis for referencing the NCC and other relevant standards in State and Territory building legislation.

Table 1: State and Territory Building Legislation Referencing the National Construction Code

State	Act/Regulation	Section of Act	Regulation No.
Australian Capital Territory	<i>Building Act 2004</i>	Section 136 Plus Section 49 which describes the Building Code of Australia as a minimum standard.	Issued from time to time, e.g. Building (Publication of Building Code) Notice 2010 (No 1)
New South Wales	<i>Environmental Planning and Assessment Act 1979</i>	Section 80A	
	<i>Home Building Act 1989</i>	Section 7E and Section 16DE	
	<i>Environmental Planning and Assessment Regulation 2000</i>	Clause 7 and 98	Clause 7 and 98
	<i>Home Building Regulation 2004</i>		Clause 12, and Schedule 2 Part 1 Clause 2(1)(a)
Northern Territory	<i>Building Act 1989</i>	Section 52	
	<i>Building Regulations</i>		Regulations 2 and 4
Queensland	<i>Building Act 1975</i>	Sections 12, 14 and 30	
South Australia	<i>Development Act 1993</i>	Section 36	
	<i>Development Regulations 2008</i>		Regulation 4
Tasmania	<i>Building Act 2000</i>	Sections 55	
Victoria	<i>Building Act 1993</i>	Section 9	
	<i>Building Regulations 2006</i>		Regulation 109
Western Australia	<i>Building Act 2011</i>	Section 37	
	<i>Building Regulations 2012</i>		Regulation 31A

3.2.1 National Construction Code

The NCC is developed and published by the Australian Building Codes Board (ABCB). The NCC details the minimum necessary standards of performance for all buildings in relation to health, safety (including structural safety and safety from fire), amenity, and sustainability.

The NCC series currently comprises the following three volumes:

- Volume One: Building Code of Australia Class 2 to Class 9 Buildings
- Volume Two: Building Code of Australia Class 1 and Class 10 Buildings
- Volume Three: Plumbing Code of Australia.

The Australian Government and all State and Territory Governments are signatories to an Intergovernmental Agreement which commits them to supporting the ABCB, and commits them to the adoption of the NCC through their respective building and plumbing legislation.

The Building Code of Australia and Building Product Conformance

In respect to building product conformance, the BCA provides a framework for procurers to use by:

- setting an objective for the performance of a building
- setting out the relevant performance requirements for a building and its construction materials
- referencing relevant minimum technical standards for product performance
- identifying a range of methods for verification of performance of both a building and its construction materials.

For building Classes 2 to 9 (NCC Volume One), Part A2.1 of the BCA requires that:

Every part of a building must be constructed in an appropriate manner to achieve the requirements of the BCA, using materials that are fit for the purpose for which they are intended.

For building Classes 1 and 10 (NCC Volume Two), Part 1.2.1 of the BCA requires that:

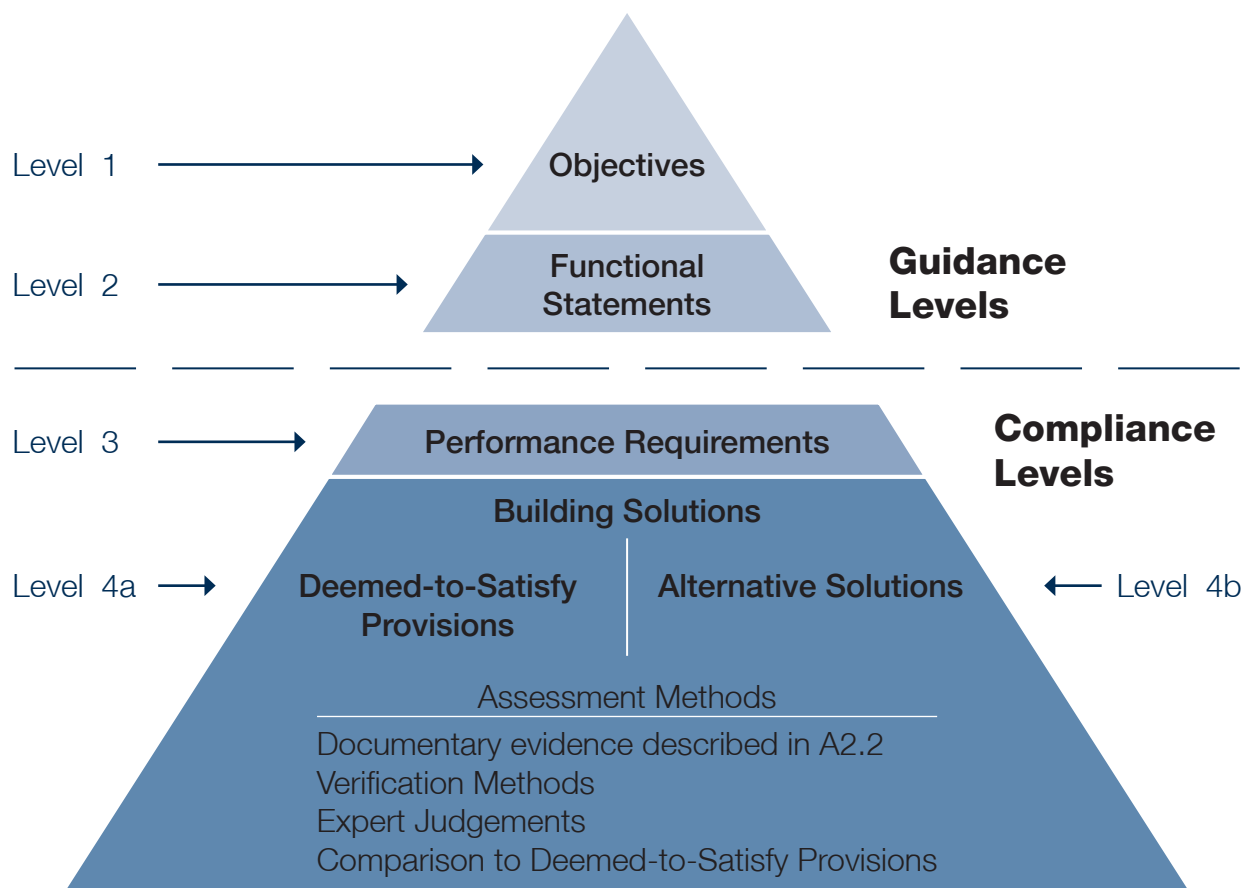
Every part of a building must be constructed in an appropriate manner to achieve the requirements of the Housing Provisions, using materials that are fit for the purpose for which they are intended.

The BCA is referred to as a performance-based document in that it provides flexibility when designing a building. The performance requirements set out the minimum standards a building must achieve in relation to such things as the structure, damp and weatherproofing, fire safety, health and amenity, safe movement, access and egress, and energy efficiency.

The flexibility allowed under the performance-based BCA means that constructors are not locked in to a specific construction method and are able to achieve compliance in several ways. To that end, the NCC allows for a number of methods to achieve a building solution, provided the method adopted complies with the performance requirements set out for each aspect of the design.

The structure of the BCA is shown in Figure 3.1.

Figure 3.1: Hierarchy of the Building Code of Australia (BCA)



Source: ABCB (2012).

Below is a short overview of the key terms used in Figure 3.1 and their meanings.

- **Level 1 (Objectives)** – Statements that outline the reason/driver for the requirements of the Code.
- **Level 2 (Functional Statements)** – Statements which describe how a building, in a functional sense, could fulfil the Objectives.
- **Level 3 (Performance Requirements)** – Descriptions of the level of performance to be achieved by building products, design and construction, in order to satisfy the Functional Statements and Objectives.
- **Level 4 (Building Solutions)** – An outline of two methods (the ‘Deemed-to-Satisfy Provisions’ and the ‘Alternative Solutions’) that can be followed to demonstrate compliance with the Performance requirements in the BCA.

Achieving a Building Solution

In designing and constructing an appropriate building solution that complies with the performance requirements in the BCA, one of two options must be followed:

• Option 1 – Deemed-to-Satisfy Provisions

The most common method to achieve a Building Solution is to adopt the Deemed-to-Satisfy Provisions which represent accepted compliance options for each Performance Requirement. Deemed-to-Satisfy Provisions are provided in both Volumes of the BCA. In Volume One, there is only one option setting out the technical requirements as Deemed-to-Satisfy Provisions. In Volume Two, there are generally two options – an ‘Acceptable Construction Practice’ (ACP), which is the technical information specified in the BCA or an ‘Acceptable Construction Manual’ (ACM), which generally includes reference to an Australian Standard for the particular building element (e.g. Part 3.4.3 Timber Framing refers to AS 1684.2–2010 *Residential timber-framed construction – Non-cyclonic areas*).

Meeting the Deemed-to-Satisfy Provisions will guarantee compliance with the BCA performance requirements. If the manufacturer or supplier of a building product can show that the product meets these requirements, a building surveyor is unlikely to require any further evidence that the product is fit for purpose.

• Option 2 – Alternative Solutions

A Building Solution can also be achieved by way of an ‘Alternative Solution’ which meets the Performance Requirements. This performance-based concept allows for increased design scope and acknowledges that, while the objectives of the BCA need to be consistently met, there are multiple ways to do this. It is critical that any Alternative Solutions which rely on the procurement of construction products are clearly documented.

If a design or element of a design does not meet the Deemed-to-Satisfy Provisions, it can still comply with the BCA if it can be demonstrated that the Alternative Solution complies with the relevant Performance Requirements. This method, known as an Alternative Solution, is permitted to demonstrate conformance.

Evidence must be supplied to support the Alternative Solution, and that evidence must show how the use of a product or form of construction will meet the BCA performance requirements. There are a variety of assessment methods which can be used to determine the suitability of the alternative solution. These are set out in the BCA and include:

- providing evidence to support that the product, form of construction or design meets a Performance Requirement (such as reports from Registered Testing Authorities)
- providing Verification Methods such as a test, inspection, calculation or other method that determines whether a Building Solution complies with the Performance Requirements
- making comparisons with the Deemed-to-Satisfy Provisions that may be issued by the appropriate authority
- providing an Expert Judgement about the Alternative Solution.

When used, the Alternative Solution design, including how it purports to meet the relevant Performance Requirements, must be documented and included as part of the building permit application. It must be approved by the building surveyor or approving authority before work commences.

Information Requested during the Approval and Construction Process

A building permit generally states that the work, if carried out in accordance with the approved plans and specifications, will conform with the BCA. The relevant approval body will require information to verify this conformance as part of the building permit application. During and after construction of a building, the approval body will then require further information to verify that the building work, including products, has been completed in accordance with the approval.⁶

⁶ Some products (mostly minor building elements, e.g. cupboard handles) may not be captured by the BCA but will still be governed by the provisions of the ACL

In respect to the building products used, the approvals process will require the provision of appropriate documentation, potentially at both the design and construction stages (including installation and commission), to verify conformance with the BCA. Therefore, a designer must decide what option to use in the building design. In doing so, the designer must use the Deemed-to-Satisfy Provisions or an 'Alternative Solution'. Compliance with Deemed-to-Satisfy provisions may be used as documentary evidence to demonstrate that a product complies, or a product that forms part of an Alternative Solution, achieves the required performance outcome, individually or as part of a system.

The onus is then on the builder to ensure they have ordered and used products that conform to the BCA and to retain appropriate evidence of conformance.

Where an Alternative Solution is sought, appropriate verification of suitability will need to be obtained by the builder in order to demonstrate how the Alternative Solution as a whole, or products that form part of the Alternative Solution, meet the relevant Performance Requirements.

Evidence of Suitability

Part A2 (Volume One) and Part 1.2 (Volume Two) of the BCA set out the requirements for acceptance of design and construction for building products (excluding plumbing and electrical products). These provisions explain how to provide evidence of suitability for 'a material, form of construction or design', specifying the types of evidence that are required to demonstrate that a product meets a Performance Requirement. These can also be referred to as conformity assessment paths and may include one or a combination of the following.

- *"A report issued by a Registered Testing Authority, showing that the material or form of construction has been submitted to the tests listed in the report, and setting out the results of those tests and any other relevant information that demonstrates its suitability for use in the building.*
- *A current Certificate of Conformity or a current Certificate of Accreditation.*
- *A certificate from a professional engineer or other appropriately qualified person which:*
 - *certifies that a material, design or form of construction complies with the requirements of the BCA*
 - *sets out the basis on which it is given and the extent to which relevant specifications, rules, codes of practice or other publications have been relied upon.*
- *A current certificate issued by a product certification body that has been accredited by the Joint Accreditation System of Australia and New Zealand (JAS-ANZ).*
- *Any other form of documentary evidence that correctly describes the properties and performance of the material or form of construction and adequately demonstrates its suitability for use in the building."*⁷

Section 4 of this Guide provides more details on the selection of conformity assessment paths that can be used to obtain some of these types of evidence. For more information on those assessment pathways not covered, procurers are recommended to refer to the NCC directly and to consider other reference documents such as *Using the Product Assurance Framework to Support Building Code Compliance – A Guide for Manufacturers and Suppliers of Building Products*.⁸

The BCA provides additional detailed information on the types of evidence and certification considered acceptable for different types of building products. However, the BCA does not specify exactly which type of evidence should be provided for any given building product (apart from plumbing products). This is a matter for the procurer and the building approval authority to determine.

Where building products rely on compliance with Deemed-to-Satisfy Provisions and referenced Australian Standards to demonstrate acceptable performance, these provisions and standards can prescribe the documentary evidence that must be provided to verify conformance. For example, some Australian Standards include requirements for marking or labelling of conformance e.g. AS 2047: 1999 *Windows in buildings – Selection and installation* and AS 1684.2: 2010 *Residential timber-framed construction - Non cyclonic areas*. This may take a number of forms including conformance labelling, stamping and certificates. In the absence of a requirement for marking or labelling of conformance, separate evidence of suitability should be obtained and retained.

Section 5 of this Guide provides more information about selecting the appropriate conformity assessment path.

⁷ In the Building Code of Australia (BCA) *Certificate of Conformity* means a certificate issued under the ABCB scheme for products and systems certification [ie CodeMark] stating that the properties and performance of a building material or method of construction or design fulfil specific requirements of the BCA.

⁸ Department of Housing and Works New Zealand, *Using the Product Assurance Framework to Support Building Code Compliance: A Guide for Manufacturers and Suppliers of Building Products*, April 2010.

3.3 Plumbing Legislation

State and Territory plumbing legislation either makes reference to the Plumbing Code of Australia (PCA), which is published as Volume Three of the NCC, or makes direct reference to the AS/NZS 3500 – *Plumbing and Drainage Series*, giving legal effect to the requirements of that standard as the minimum product requirements.

The PCA sets out the technical standards for how to undertake plumbing and drainage work, and makes reference to the product standards associated with that work.

Part A2.1 of the PCA sets out requirements for verifying that materials and products are suitable based on where they are used. The PCA takes a similar approach to the BCA in relation to product performance by requiring that:

Every part of a plumbing or drainage installation must be constructed in an appropriate manner to achieve the requirements for the PCA, using materials and products that are fit for the purpose for which they are intended.

Unlike the NCC Volumes One and Two, Part A2 of the PCA includes mandatory requirements for the evidence of suitability of plumbing products. The PCA sets out that certain plumbing or drainage installations must be certified and authorised. Product certification and authorisation must also comply with the procedures set out in Part G1 of the PCA (the WaterMark Certification Scheme). Plumbing products must meet the requirements of the scheme, and plumbers should refuse to install products that do not carry the WaterMark.

Where a material or product is exempted from certification under the PCA, it can be authorised for use:

- if it is certified as complying with the appropriate Australian Standard(s).
- or*
- if an appropriate Australian Standard does not exist, other evidence of suitability is provided in accordance with A2.2 of the PCA.

Furthermore, certain materials or products can be authorised for use if they are certified by a recognised body as complying with the relevant Australian Standard(s) for the specific application.

3.4 Electrical Legislation

State and Territory electrical legislation make reference to the Australian Standard series which includes AS/NZS 3000: 2007 *Electrical installations* (known as the Australian/New Zealand Wiring Rules) and supporting Australian Standards such as AS/NZS 3820 *Essential safety requirements for electrical equipment*. These standards, as well as specific product standards, provide the minimum requirements for electrical equipment (products) and installations.

The Electrical Regulatory Authorities Council has recently established the Electrical Equipment Safety System (EESS) scoped to include all electrical equipment that is not exclusive for commercial and industry use. Under the new scheme, all suppliers of “in-scope” equipment as well as higher risk products must be registered before being placed onto the market. Suppliers must declare that all equipment they supply to the market conforms with the relevant Australian Standard (or international standard or AS/NZS 3820 if no specific Australian Standard exists) and all “in-scope” equipment must be marked with the Regulatory Compliance Mark (RCM) in accordance with the rules laid out in AS/NZS 4417 series, *Regulatory compliance mark for electrical and electronic equipment* to indicate compliance with regulations. The use of the RCM on equipment is only permitted if the equipment is in conformance with the EESS.

Queensland and Tasmania adopted the EESS on 1 March 2013. At the time of publication, most jurisdictions are negotiating in good faith towards an intergovernmental agreement on the EESS.

3.5 Work Health and Safety Legislation

Building work is also subject to the requirements of State and Territory workplace health and safety laws.

The Commonwealth, States and Territories, apart from Victoria and Western Australia, have all adopted mirror Acts and Regulations based on the model *Work Health and Safety Act* to manage workplace health and safety matters.

Victoria and Western Australia have yet to adopt the new model legislation. Instead, their existing health and safety legislation continues to operate – namely, the *Occupational Health and Safety Act 2004* (Vic), *Occupational Health and Safety Regulations 2007* (Vic), *Occupational Safety and Health Act 1984* (WA), and *Occupational Safety and Health Regulations 1996* (WA).

Section 19 of the model *Work Health and Safety Act* specifies that all persons conducting a business or undertaking owe a duty of care to all other persons to ensure that, so far as reasonably practicable, they do not expose those persons to health and safety risks. As well as the primary duty of care, there are more specific duty of care provisions aimed at designers or manufacturers of plant, substances or structures, which are contained in Sections 22 and 23, respectively. Broadly speaking, these duties require designers and manufacturers to consider the health and safety of all users of the plant, substance or structure when designing or manufacturing the plant, substance or structure.

The designer's duty at Section 22 and manufacturer's duty at Section 23 requires a person conducting a business or undertaking who designs⁹ or manufactures plant, substances or structures that are to be used at a workplace – or could reasonably be expected to be used at a workplace – to ensure, so far as is reasonably practicable, that the plant, substance or structure is designed and manufactured without risks to the health and safety of certain persons.

The persons to whom the duty is owed include: anyone at the workplace who uses the plant, substance or structure for the purpose for which it was designed or manufactured; persons who handle the substance; persons who store the plant or structure; persons who construct the structure at the workplace; and anyone in the vicinity of the workplace who are exposed to the plant, substance or structure. Basically, the designer or manufacturer owes a duty of care throughout the whole lifecycle of the plant, substance or structure.

3.6 Other Legal and Statutory Obligations

Procurers have a range of obligations to use 'conforming building products' in order to ensure construction work meets the minimum requirements of the BCA, PCA and other relevant legislation (including consumer law obligations in the ACL), along with any guarantee obligations and contractual requirements.

Meeting these obligations assists in protecting a procurer's professional reputation, delivering a quality job, reducing the chance for call backs to rectify works, and minimising the risk of legal proceedings.

3.6.1 Statutory Warranties

In relation to domestic building work or housing work, almost all Australian States and Territories have specific building legislation that requires warranties concerning the products and materials used to be stated in contracts for the building work. Although the legislation is highly variable as to specifics, it is generally the case that a builder must warrant that all products supplied for use in the building work will be "good" and "suitable or proper for the purposes for which they are used". This also applies to materials and products supplied by subcontractors on the builder's behalf.

A builder is able to exclude liability for products and materials supplied under a separate building contract where the building owner supplies items and/or engages their supply directly. However, it is not possible for a builder to exclude liability for products and materials within their responsibility and control, or to install a product or material that does not meet legal requirements – refer to Section 3.6.4 in this Guide.

In the ACL, there is also a guarantee of fitness for purpose where the purpose is disclosed to the supplier by the purchaser. In the domestic building/housing context, this guarantee applies in parallel with the specific building legislation noted above. This guarantee applies where the consumer has informed the builder or supplier of the purpose, expressly or impliedly. Liability for this cannot be excluded unless the builder or supplier can show that the consumer did not rely on the skill or judgement of the builder or supplier in providing a fit-for-purpose product or material, or that it was unreasonable for the consumer to have relied on the builder's or supplier's skill and judgement in the circumstances.

3.6.2 Contractual Agreements

In an ordinary contractual arrangement between a builder and client, the builder has an obligation to construct works and supply products and materials in accordance with any contractual specifications that underpin a building contract. It is possible for contract specifications to exceed the NCC requirements but they must, at a minimum, meet the prescribed standards set out in the NCC. To reduce the incidence of disputes, it is recommended that contracts stipulate whether there are any items that will exceed the NCC requirements or are subject to an alternative solution.

⁹ Design also includes redesign or modification.

3.6.3 Supply and Install Contracts

Where a builder engages a subcontractor for the supply and installation of a product as part of the contract, the principles remain the same, i.e. the product should be fit for purpose and meet the NCC requirements. The onus is on the builder to ensure the product conforms to the NCC, and in the domestic building/housing context, the ACL.

3.6.4 Installation of Supplied Products

Even in circumstances where a builder is provided with a product or material to install by the client and this is detailed in the contract, the builder is still required by law to ensure the product or material conforms to the NCC prior to installing the product.

The builder should explain to the client that they will need to obtain proof such as certificates, reports or test results that verify the product or material conforms to the NCC in order for it to be installed. Ideally, that position should be established in the contract documents.

If conformance cannot be verified, then the builder should advise the client (in accordance with any procedures in the contract) that the work in relation to that product or material cannot progress until the situation is rectified and adequate information on demonstrating conformance is obtained.

4 Standards and Conformance

4.1 What is Product Conformity and Conformity Assessment?

Not being part of everyday speech, the use of the term ‘conformity assessment’ is primarily the domain of standards and conformance infrastructure bodies and regulatory authorities. This section seeks to explain what it is and what it means for the construction industry when seeking to ensure that the construction products used meet the necessary standards for performance.

For the purposes of this Guide, the following definitions are used.

- **Product conformity** is used to convey that a product meets specified requirements. The threshold at which product conformity is deemed to have been demonstrated is determined by a risk assessment process which considers the likelihood and consequences of product failure. For products where the risk of failure is considered high and/or consequences have health and safety impacts, third party certification is recommended. Using a standardised conformity assessment regime raises the level of confidence that product conformity has been achieved.
- **Conformity assessment** is the determination that a product, process, service or system conforms to specified requirements. These requirements can be described in a standard, other normative document, certification scheme or customer specification, e.g. contract documentation.
- **Conformity assessment bodies** (frequently called CABs) provide attestations that products, processes and systems are doing what they are supposed to do. CABs may be utilised at various points of the supply chain. CABs include test laboratories, inspection bodies and certification bodies. CABs may be first, second or third parties. Third party CABs are required to be independent of the producer or supplier of the product.
- **Standards** are voluntary consensus documents setting out specifications and procedures to ensure products, services and systems are safe, reliable and consistently perform the way they are intended to. Standards are developed by agreement and their application is by choice unless their use is mandated by government or called up in contract. Where the means of demonstrating compliance is absent or is included as an advisory or informative part of a standard, the need for conformity assessment needs to be decided by the procurer. A risk assessment will guide such decision.

See also ISO/IEC 17000 *Conformity assessment – Vocabulary and general principles*, which is a source of information on what is meant by conformity assessment and a range of other related terms.

While a number of standards have been cited in this Guide, it is recommended to check the SAI Global website (www.saiglobal.com) to ensure that the most recent standard is referenced.

4.2 Which Bodies Support Conformity Assessment Processes?

Four bodies collectively make up Australia’s standards and conformance infrastructure: the Joint Accreditation System of Australia and New Zealand (JAS–ANZ); the National Association of Testing Authorities, Australia (NATA); the National Measurement Institute (NMI); and Standards Australia (SA).

JAS–ANZ and NATA are concerned with the accreditation of conformity assessment bodies (CABs) and operate in accordance with ISO/IEC 17011: 2004 *Conformity assessment – General requirements for accreditation bodies accrediting conformity assessment bodies*.

NMI is concerned with the maintenance of measurement standards and is the peak reference body for calibration in Australia.

SA is concerned with the development and maintenance of national Standards and other normative documents.

An overview of each of the four bodies and their particular roles and functions is provided below. The Guide to Australia's Standard and Conformance Infrastructure published by the Department of Industry provides further information on Australia's conformity assessment framework.

<http://www.industry.gov.au/industry/IndustryInitiatives/TradePolicies/TechnicalBarrierstoTrade/Pages/StandardsandConformance.aspx>

The Australian conformity assessment framework is also aligned with a range of international conformity assessment frameworks. The key approaches are also set out below.

4.2.1 Joint Accreditation System of Australia and New Zealand

JAS-ANZ is the government-appointed accreditation body for Australia and New Zealand, which is responsible for providing accreditation of CABs that undertake management system, personnel and product certification and inspections. JAS-ANZ accreditation is built upon a competency-based assessment process, and provides confidence in CAB's capability to deliver reliable certification and inspection services.

More information about JAS-ANZ is available on the following website: www.jas-anz.org

4.2.2 National Association of Testing Authorities, Australia

NATA is recognised by governments as Australia's national authority for the accreditation of laboratories and reference material producers. NATA is also recognised as a peak body for the accreditation of inspection bodies and proficiency testing scheme providers. NATA accreditation is based on a process of peer assessment of a facility's competence and its capability to produce reliable data from tests, measurements, inspections and related services.

NATA provides specific guidance on working with NATA accredited building product laboratories in the form of Industry User Guide No 4 for building products.

More information about NATA is available on the following website: www.nata.com.au

4.2.3 National Measurement Institute

The NMI is responsible for Australia's national infrastructure in terms of physical, chemical, biological, and legal measurements. Under the *National Measurement Act 1960*, the NMI is responsible for coordinating Australia's national measurement system and for establishing, maintaining, and realising Australia's units and standards of measurement which, in turn, provide measurement traceability.

More information about the NMI is available on the following website: www.measurement.gov.au

4.2.4 Standards Australia

Standards Australia is recognised by governments as Australia's peak voluntary standards body. It coordinates standards development activities (referred to as 'standardisation'), develops internationally-aligned Australian Standards for public benefit and in the national interest, and facilitates the accreditation of other standards development organisations.

From the perspective of the construction industry, conformity assessment – and the standards and conformance infrastructure bodies that underpin it – provides a high degree of confidence in the products used and the services delivered.

More information about SA is available on the following website: www.standards.org.au

4.2.5 International conformity assessment frameworks

International Laboratory Accreditation Cooperation (ILAC) and International Accreditation Forum (IAF)

ILAC is the international organisation for accreditation bodies operating in accordance with ISO/IEC 17011 and involved in the accreditation of conformity assessment bodies (CABs) including testing and calibration laboratories (using ISO/IEC 17025) and inspection bodies (using ISO/IEC 17020). NATA is Australia's member of ILAC.

IAF is the international organisation for accreditation bodies operating in accordance with ISO/IEC 17011 and involved in the accreditation of CABs including product certification bodies (using ISO/IEC 17065) and management system certifiers (using ISO/IEC 17021). JAS-ANZ is Australia's member of IAF.

ILAC Mutual Recognition Arrangement (MRA) and IAF Multilateral Recognition Arrangement (MLA)

The ILAC MRA and IAF MLA together enhance the acceptance of products across national borders. By removing the need for additional testing, inspection and certification of imports and exports, technical barriers to trade are reduced in accord with the WTO Technical Barriers to Trade Agreement.

Accreditation bodies that are signatories to the arrangements have been peer evaluated in accordance with the requirements of ISO/IEC 17011 to demonstrate their competence. The MRA/MLA signatories have in turn accredited their CABs for competence in accordance with ISO standards relevant to the particular conformity assessment activity. This chain of attestation of competence enables the global acceptance of results from accredited conformity assessment bodies.

The principle objective of these arrangements is that products are "tested/ inspected/ certified once - accepted everywhere".

4.3 What Conformity Assessment Paths are Available?

A number of conformity assessment options are available, providing a range of measures to help manage risk. An overview of these is located in Appendix 1. Some of these may be augmented by accreditation systems, which offer increased confidence through a process of peer assessment of a CAB's competence and processes.

Some approaches rely on a single pre-market conformity assessment process, while others utilise several processes pre- and post-market.

4.3.1 Testing

The different types of tests that may be undertaken to support the assessment of conformance are described below. Notwithstanding which type is selected, all testing should be performed in accordance with ISO/IEC 17025: 2005 *General requirements for the competence of testing and calibration laboratories*.

Type (approval) testing

Testing of a product at prototype or 'first-off-the-line' stage (initial type testing - ITT) demonstrates that the product, as designed, conforms to the requirements of the relevant standard and/or specification. A 'type test report' is sometimes used as the basis for supply to the market, or it can form the basis of a supplier declaration, approval by a regulatory authority, or product certification by a certification body operating under an appropriate scheme.

Type testing may also be used as a post-market tool to verify that a product still meets the standards or specifications, as was previously demonstrated when the product was first placed on the market.

Production testing

Production testing can comprise either 100% testing of production, or can be undertaken by way of batch testing where a sample is selected for testing from a batch or lot. It may, therefore, be used on an entire consignment, or applied to a particular batch or series of batches. Production testing may or may not involve verifying performance above that expected in actual use, but as a minimum it is intended to demonstrate that production continues to comply with the relevant standards.

Proof testing

Proof testing is used to demonstrate the ongoing fitness-for-purpose of a product.

It may be applied to a single unit for the purpose of assessing only that unit or, where the unit tested can be reliably regarded as being a representative sample of a batch or consignment, the result may be used to “pass” the entire batch or consignment.

Such a test may involve verifying performance above that expected in actual use in order to demonstrate performance and/or safety margins but not to the level that would be associated with a type test. Indeed, proof testing is not intended to compromise the use of the unit or sample tested and, as such, is not intended to be destructive. Because of this, failure under a well-designed proof test shows that the product probably falls well short of its design specifications.

4.3.2 Inspection

Various inspection options are available to support the conformity assessment process, as described below. Regardless of which option is selected, inspection activities should be undertaken in accordance with ISO/IEC 17020: 2012 *Conformity assessment – Requirements for the operation of various types of bodies performing inspection*.

Design verification

This is a comprehensive, systematic examination and review of a design to evaluate its compliance with specified requirements, and to identify any perceived deficiencies. While a manufacturer could be expected to undertake this type of verification as part of any design process, it can also be performed as a stand-alone conformity assessment process by a third party that possesses the relevant engineering experience and competence.

Fabrication inspection

Fabrication inspection, which applies more to large and complex assemblies than materials and simple construction products, can be conducted throughout the manufacturing process to ensure that the product is true to the design, and is free from faults or omissions introduced during the assembly/construction phase.

Installation inspection

Even a fully compliant product can have its efficacy or safety compromised during installation. Installation inspection is used to provide confidence that conformity is maintained during the installation process.

In-service inspection

This type of inspection involves verifying compliance of products or structures in-situ, and provides confidence that the product or structure continues to comply with specified requirements while in service.

4.3.3 Product Certification

Product certification is an independent attestation of compliance by a certification body (CB). The CB is a type of CAB specialising in certification, and which may have been accredited to demonstrate its impartiality and competence. It provides a third party service in areas where there is trade in relevant goods and services.

The CB attests to the conformity of the product based on its evaluation of the product. This evaluation can be conducted by the CB itself or may be outsourced to laboratories, inspection bodies or auditors/assessors.

A number of types of product certification exist to assist procurers in reducing the risk of unpredicted product failure (that is, failure that occurs during a product's expected life). The certification type(s) is usually selected according to the degree of assurance it provides. The product certification may rely on simple type test schemes, where certification is provided based on the outcomes of an initial test report and design review. Alternatively, the certification may be more complex, involving type testing and design evaluation, supplemented by initial and ongoing audits of manufacturing quality control systems and periodic re-testing of actual production.

For products captured by the NCC, the evidence of suitability requirements (Part A2.2 Vol 1, Part 1.2 Vol 2, and Part A2.2 Vol 3) provide scope for other types of product certification to be provided including certificates from a professional engineer or other appropriately qualified person. These types of certification must:

- certify that a material, design or form of construction complies with the requirements of the NCC; and
- set out the basis on which it is given and the extent to which relevant specifications, rules, codes of practice or other publications have been relied upon.

Depending on the product type and the risk associated with its use, these types of certification may be also be considered acceptable. Chapters 5 and 6 of this Guide provide more guidance on selecting the right conformity assessment pathway.

4.3.4 Quality Management Systems (QMS) Certification

QMS certification involves the auditing of a supplier against a management system model. Such models usually promote the use of the 'plan-do-check-act' cycle in all relevant processes within the supplier organisation. This encourages the organisation to analyse its operations in detail to identify opportunities for standardisation and improvement, with the aim of enhancing efficiency, reducing rejects and maintaining customer satisfaction. The most commonly-used QMS model in Australia is AS/NZS ISO 9001: 2008 *Quality management systems – Requirements*. Many CBs offer third party certification to this standard.

QMS certification provides confidence that the organisation is responsive to customer needs and capable of consistently meeting customer expectations. However, it does not provide independent attestation that the organisation's product complies with a particular standard. QMS certification should, therefore, be seen as complementary to, rather than as a replacement for, product certification.

As a result of the complementary nature of QMS and product certification, many product certification schemes incorporate all or parts of AS/NZS ISO 9001 to provide confidence in consistent quality, especially in relation to products for which the risk of premature failure is considered too high.

4.4 Supplier Declaration of Conformity (SDoC)

In some instances, the conformity assessment process may take into account a SDoC, which involves the supplier of a product attesting to its conformity with a required standard or customer specification. SDoCs may be used within a regulated environment, or under voluntary sector arrangements.

The basis for the declaration needs an appropriate justification, such as the results of testing or an engineering evaluation of the design. The SDoC process places the responsibility for the product's performance and/or safety on the person signing the declaration.

A conformity assessment scheme may require lodgement of the SDoC with another agency, or it can require the declaration to be available upon request of an authority or customer.

5 Determining Whether a Product is Fit for Purpose

The aim of this section is to provide guidance to assist procurers in determining whether particular construction products are fit for the purposes for which they are intended.

5.1 What is Fitness for Purpose?

Manufacturers and suppliers generally have an obligation to offer products and materials for sale that are fit for purpose. This arises from common law or legislation or is an express or implied term in most contracts where supply of a product or material is a requisite part of the contract.

Procurers will best serve the client (themselves or others) by facilitating the use of products and materials that comply with both quality expectations and with relevant laws. Procurers also need to recognise that having a low expectation of quality does not mean that a product or material will be fit for purpose nor in compliance with relevant laws. Whilst quality expectations may vary, regulatory requirements are not optional and must be met in all cases.

As set out in Section 3 of this Guide, building legislation in every State and Territory requires new building work to meet a range of technical standards. All structural building products are required to comply with the NCC and be fit for purpose. This obligation extends to products that are not required to conform to the NCC, but are captured by other legal obligations, as also described in Section 3.

Conformance and other compliance information will generally be required to be submitted as part of the building approval process. For larger construction projects where building approval is not required, these requirements will generally be captured in the contract documentation.

Examples of products that would not be covered by the NCC or other regulated building standards include items such as kitchen cupboards, architraves, skirtings, wall and floor tiles, door handles, hinges and basins. However, these products are still governed by the ACL, which means they are still required to be manufactured to a level where they are fit for their intended purpose.

Under the ACL which took effect on 1 January 2011, Australia now has a national product safety system. The Australian Government is able to:

- issue safety warning notices
- ban products, either temporarily or permanently
- impose mandatory standards for products and product-related services
- issue compulsory recall notices, requiring businesses to recall a product
- impose information standards, requiring that certain information about a product be provided to consumers before or at the time of purchase.

Other parties in the construction supply chain have complementary responsibilities, such as selecting products that are fit for purpose (e.g. designers and architects) or checking that the products used are fit for purpose at or after installation (e.g. builders, building certifiers, engineers, etc). The fact that multiple parties have some level of responsibility points to the need for each party to have a clear understanding of their specific obligations.

Fitness for purpose is not just a matter of legal requirement. If a product or material is specified in a supply agreement or a building contract to be of a certain quality, failure to meet the specified quality or performance standard means it is not fit for purpose in the context of that contract, even if it might be fit for purpose according to an applicable law.

There are implied warranties at common law that apply in the context of building and supply contracts. One of these is a warranty of fitness for purpose. These implied warranties are in addition to the guarantees that the ACL sets out, elsewhere described in this Guide. However, the warranty of fitness for purpose may not be implied (other than in ACL governed contracts) where the failure is related to the particular contract specification.

The process of determining whether a product is fit for purpose, including obtaining appropriate evidence of product compliance, can be complex at times. The responsibility to gather such evidence falls to many different people in the building and construction process. It is, therefore, important that everyone involved in the procurement and supply chain is aware of their role in ensuring that the products selected in design, ordered and delivered to site match up to what was intended.

5.2 Making Decisions about Fitness for Purpose

To determine whether a product is fit for purpose, it is recommended that procurers consider following the steps in Figure 5.1 and Figure 5.2. This type of methodical process aims to support effective decision-making and reduce the likelihood of non-conforming product that is not fit for its intended purpose being used in building and construction projects.

The steps have been separated into the two distinct stages in the procurement process, which are:

- design and specification stage
- on-site construction stage.

Figure 5.1: Decision-making during the Design and Specification Stage

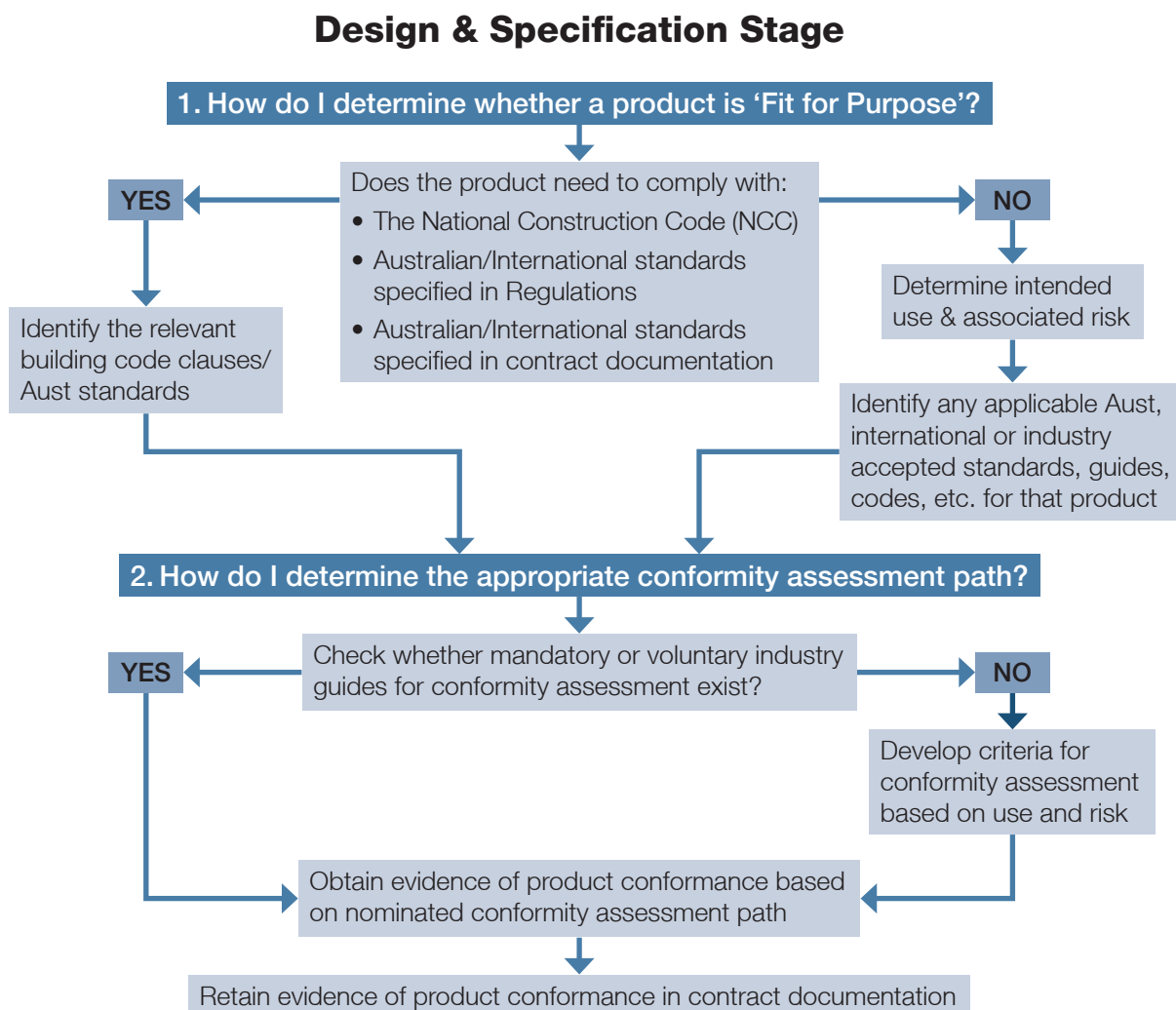
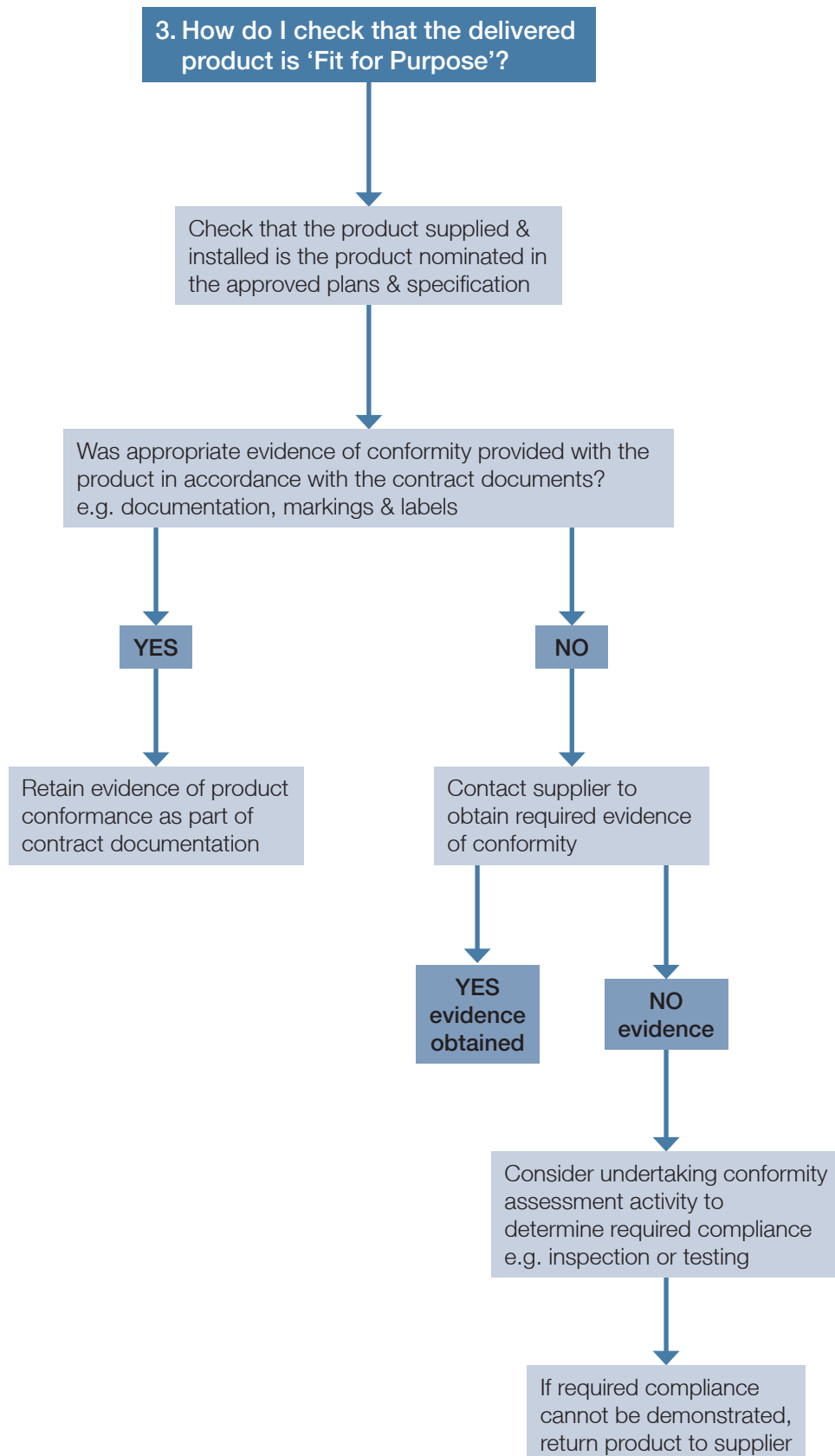


Figure 5.2: Decision-making during the Construction Stage**On site construction stage (delivery)**

6 Selecting the Appropriate Conformity Assessment Path

Summary

- There are four main conformity assessment activities associated with verifying that a product fulfils specified requirements.
- Procurers (particularly builders, designers, and construction certifiers) and suppliers need to choose the appropriate conformity assessment path in order to manage risk.
- Conformity assessment activities may be carried out by first, second or third parties.
- There are internationally agreed standards for carrying out conformity assessment activities.
- Not all combinations of conformity assessment are applicable to, or suitable for, all types of products and not all conformity assessment schemes do the same thing. Different combinations of conformity activities and the parties that undertake them can give rise to different levels of confidence that the product complies with the specified requirements.
- The needs of the stakeholders, risk factors, product type and characteristics, plus the desired level of confidence in product conformity drive the choice of which individual conformity assessment pathway to choose.
- Where multiple options exist, an assessment of the costs and benefits of each would generally be undertaken as part of the decision-making process.

6.1 Overview

Procurers, designers, construction certifiers and product suppliers need to choose the appropriate conformity assessment path to manage risk for any products under consideration.

With several different types of certification and accreditation, making the most appropriate conformity assessment choice can mean the difference between a stakeholder fulfilling their duty of care or not.

There are four main conformity assessment activities associated with ensuring that a product fulfils specified requirements (e.g. a standard). These are:

- testing the product or a sample of the products
- inspecting the product or a sample of the product
- auditing the quality management system that covers the production of the product
- assessing the product and production process associated with the product.

These conformity assessment activities may be carried out by the following parties:

- first party (1st) – the manufacturer and/or supplier (or related group)
- second party (2nd) – the purchaser and/or user
- third party (3rd) – an independent party that has no interest in the transaction between the first and second party.

There are internationally agreed standards for carrying out conformity assessment activities by one or more of the above parties as follows.

- Testing can be carried out by laboratories and testing facilities that fulfil the requirements of ISO/IEC 17025: 2005, *General requirements for the competence of testing and calibration laboratories*. Laboratories and testing facilities fulfilling this standard may be 1st, 2nd or 3rd-party laboratories and testing facilities.
- Inspection can be carried out by inspection bodies that fulfil the requirements of ISO/IEC 17020: 2012 *Conformity assessment – Requirements for the operation of various types of bodies performing inspection*. Inspection bodies fulfilling this standard may be 1st, 2nd or 3rd-party inspection bodies.
- Auditing the quality management system that covers the production of the product can be carried out by using ISO 19011: 2011 *Guidelines for auditing management systems* in the case of 1st and 2nd parties. In the case of auditing by a 3rd party, this can be done by management system certification bodies fulfilling the requirements of ISO/IEC 17021: 2011 *Conformity assessment – Requirements for bodies providing audit and certification of management systems*.
- Assessing the product and production process associated with the product can take into account the outputs of the previous conformity assessment activities (i.e. testing, inspection, audit of the quality management system). Assessing the product and production process can result in a Supplier's Declaration of Conformity if it is undertaken by a 1st party¹⁰. In the case of assessment of the product and production process by a 3rd party, this can be done by a product certification body fulfilling the requirements of ISO/IEC 17065: 2012 *Conformity assessment – Requirements for bodies certifying products, processes and services*.

Different combinations of the above conformity activities and parties that undertake them can give rise to different levels of confidence that the product complies with the specified requirements. Which combination of activities and parties to accept is a risk judgement. One understanding is that for high-risk¹¹ products, a combination of conformity assessment activities undertaken by independent third parties can give rise to greater confidence in any subsequent claims of conformity.

Combinations of conformity assessment activities and the identification of the parties that can undertake those activities are often prescribed in conformity assessment schemes. When third parties are relied upon, these conformity assessment schemes are called certification schemes, and if those schemes focus on products, then they are known as product certification schemes.¹²

Not all combinations of conformity assessment are applicable to, or suitable for, all types of product and not all conformity assessment schemes do the same thing.

Conformity assessment schemes come in many different varieties and may offer different levels of assessment and risk management, from basic document-based studies through to full independent product assessment with continuing, periodic validation of supplier claims of conformance. The needs of the stakeholders, product types, and the characteristics that are to be assessed, plus the desired level of confidence in product conformity drive the choice of which individual conformity assessment scheme to choose.

There are several basic activities that comprise conformity assessment schemes. Some can be used alone. Others are typically activities that are combined in a complete system. The basic activities of conformity assessment (discussed in Chapter 4 of this Guide) are testing, inspection, supplier's declaration and certification.

The selection of appropriate conformity assessment activities in a system involves consideration of several factors including:

- the perceived risks associated with non-conformity (i.e. the low, medium or high risk of occurrence matched to the low, medium or high consequence of that occurrence);

¹⁰ The relevant international standards for 1st party claims of conformity are ISO/IEC 17050-1: 2004 *Conformity assessment – Supplier's declaration of conformity – Part 1: General requirements*, and ISO/IEC 17050-2: 2004 *Conformity assessment – Supplier's declaration of conformity – Part 2: Supporting documentation*.

¹¹ In accordance with ISO 31000: 2009 *Risk management – Principles and guidelines*, risk can be understood through examining the consequences and likelihood of failure of the product.

¹² For further information see ISO/IEC 17067 *Conformity assessment – Fundamentals of product certification and guidelines for product certification schemes*.

- the practical means of evaluating key characteristics;
- the scale and type of manufacture and/or production operation or delivery;
- the effectiveness of marketplace mechanisms to remove non-conforming products from the market;
- the effectiveness of penalties for placing non-conforming regulated products in the market; and
- the effectiveness of systems to recall non-conforming regulated products from the market.

Broadly speaking, the lower the level of risk of occurrence of product failure and the lower the consequence of such a failure, the lower the necessity for a product-specific full validation of a supplier's claims of product conformity to a given construction products standard.

These principles are detailed in the governing international conformity assessment systems standards noted above.

Where appropriate, assessing the product and production process associated with the product can take into account the outputs of previous conformity assessment activities (e.g. testing, inspection, audit of the QMS). Assessing the product and production process can also result in an SDoC, if it is undertaken by a first party.¹³ In the case of assessment of the product and production process by a third party, this can be achieved by a product certification body fulfilling the requirements of ISO/IEC 17065: 2012 *Conformity assessment – Requirements for bodies certifying products, processes and services*.

6.2 Which Conformity Assessment Path is Correct?

Not all conformity assessment schemes are applicable to, or suitable for, all types of products, and not all conformity assessment schemes do the same thing.

Where there is more than one conformity assessment pathway that may be applicable, selecting the most appropriate combination of activities and assessing parties is a process of risk evaluation, and requires judgment. For example, for high-risk products¹⁴ required for a particular application, a combination of conformity assessment activities undertaken by independent third parties will typically give rise to greater confidence in any subsequent claims of conformity.

With a wide range of conformity assessment paths available, how does the procurer identify the path that best addresses its needs, while remaining cost-effective? Where such decision is not already dictated by regulators, scheme requirements or the market, then a range of factors such as stakeholder needs, risk, the product type and its characteristics, and the desired level of confidence in product conformity will need to be considered in choosing which assessment pathway is preferable. In circumstances where there are multiple options, an assessment of the costs and benefits of each conformity assessment path should be undertaken.

Risk-related considerations and matters relating to product characteristics are often considered the most difficult to ascertain and as such, they are discussed in more detail below.

6.2.1 Risk Assessment

Risk assessment involves identifying all the possible foreseen and unforeseen hazards affecting the functions the product is intended to perform, and relating these to the characteristics specified in the standard or other normative document. The likelihood of the hazards emerging prior, during and after installation of the product (including under normal and abnormal conditions) is estimated and the consequences of each hazard determined.

For example, where the consequence is severe and the likelihood is moderate or high, the procurer may consider that the risk is too high to accept a product solely on the basis of an SDoC. As such, the procurer is likely to consider using product certification as a mechanism to reduce the risk to acceptable levels. The choice of product certification scheme will depend largely on the severity of those risks that are not capable of being managed by the use of an SDoC alone.

An evaluation of the range of relevant risk factors will help to clarify the path that is appropriate for the item in question.

¹³ The relevant international standards for first party claims of conformity are ISO/IEC 17050-1: 2004 *Conformity assessment – Supplier's declaration of conformity – Part 1: General requirements*, and ISO/IEC 17050-2: 2004 *Conformity assessment – Supplier's declaration of conformity – Part 2: Supporting documentation*.

¹⁴ In accordance with ISO 31000: 2009 *Risk management – Principles and guidelines*, risk can be understood through examining the consequences and likelihood of failure of the product.

A starting point could be the implications of getting the decision wrong. That is, what are the risks associated with using a product on the basis of incorrect testing, measurement, inspection or certification? For example:

- Are there health and safety risks associated with a non-conformity:
 - to people using the product?
 - to personnel at the site in which the product is used?
 - to the general public?
- What are the liabilities of use?
- Are there consumer protection issues (apart from safety), e.g.:
 - purchase cost to the consumer?
 - existence of other consumer protection legislation?
- Is there potential for significant economic loss to:
 - people using the product?
 - the owner of the construction work in which the product is used?
 - the general public?
- What product-specific factors come into play, e.g.:
 - operational (installed) life?
 - product market life?
- Are there issues of international trade, such as:
 - testing or inspection requirements of the purchaser?
 - potential for non-acceptance of test data to be cited as a discriminatory trade barrier?
- Are there potential downstream costs that could arise from longer-term failure?

Generally the lower the level of risk of product failure and/or consequence of such a failure, the greater discretion a procurer can use to obtain product specific validation of a supplier's claims of product conformity to a particular standard.

6.2.2 Product Types and Characteristics

Some conformity assessment processes are simply not appropriate to many construction products.

In many instances, manufactured products have to be treated differently from raw materials. Further, serially produced products and material have to be treated differently from customised products.

For example, the conformity assessment options chosen would be expected to be quite different, such as:

- a window assembly custom-manufactured for a large construction project – fabrication inspection would be an appropriate element
- high tensile bolts – type certification would be an inferior choice when compared to a scheme that includes periodic proof testing from production
- cementitious materials – chemical analysis and physical testing performed as part of production quality assurance would be essential.

6.3 Existing Conformity Assessment Schemes and Guides

There are a range of existing conformity assessment schemes and/or guides available to assist manufacturers and suppliers of for construction products operating in the Australian market to obtain information and provide appropriate verification of a products performance.

6.3.1 Industry-Supported Schemes and Guides

A number of industry-supported product schemes and guides have been established in Australia. These schemes and guides are operated by industry associations or product certification bodies and provide verification for specific product categories. These schemes and guides range from programs that inspect and verify individual manufacturing plants and the products manufactured, to programs that focus on the product only. These schemes and guides can offer the procurer an alternative verification pathway where there are no regulated requirements for a product's quality. Where requirements do exist, they can offer a reliable means of ensuring conformance has been achieved.

Appendix 1 provides an outline of several public and industry specific schemes and guides currently operating in Australia. By its nature, Appendix 1 will change and is designed to be updated regularly. Reference should be made to the appropriate associations and product certification bodies for that particular product sector and other references provided in Appendix 1 for the most up-to-date information for particular products.

A number of these industry-developed schemes have been in place for some time and have been effective, however, it should not be interpreted that they are endorsed by government.

6.3.2 Products not covered by Industry-Supported Schemes

There are many product sectors where industry schemes do not exist currently. There may also be limitations on some industry schemes which require the manufacturer to be a member of the scheme to be eligible to have their products certified. This means that not all manufacturers may be able to access an industry-supported scheme. In these cases, the procurer should consider the 12 principles set out in Chapter 2, along with following the steps set out in Chapter 5, Figure 5.1 and Figure 5.2 and any industry recommendations set out in Appendix 1, to determine the most appropriate way to provide confirmation that a construction product meets the relevant technical standards.

6.3.3 Conformity Assessment Bodies

Conformity assessment bodies are accredited to undertake a range of testing and certification. The fact that a conformity assessment body has accreditation to operate does not automatically guarantee that they will have the appropriate expertise and accreditation to test construction products.

It is important to confirm the type of work that individual conformity assessment bodies can undertake. An up-to-date listing of accredited conformity assessment bodies is available through the NATA website (www.nata.com.au) and the JAS-ANZ Register (www.jas-anz.org/register).

Manufacturers and suppliers seeking testing of construction products should consult these registers before engaging a conformity assessment body. Similarly, specifiers should check that the conformity assessment body referenced on any test reports or certification supplied with a construction product is appropriately accredited.

6.4 What Level of Evidence is Appropriate?

6.4.1 Verification, Certification and Reports

In most cases the information relied upon to verify that a product is fit for purpose will be documentation of some type. This will range from testing certificates and reports issued by testing authorities to product technical information produced by the manufacturer of the product.

As discussed in Section 3.2.1, for building work captured by the NCC there are five types of documentation that can be obtained to provide evidence of suitability.

In some instances, it is also possible for certain design professionals (such as engineers) to provide certification that a product, or more commonly a building system, has been designed in accordance with relevant standards.

For products not covered by the NCC, there are also different levels of assurance that the manufacturer could supply. These include:

- a warranty document that details the warranty period and conditions
- test results describing the level of conformance of the product with respect to a non-referenced Australian Standard, and a certificate of conformance or a report from an industry/product expert confirming compliance with the standard
- technical information supplied by the manufacturer, including specifications and installation instructions
- endorsement by an industry scheme such as the Engineered Wood Products Association of Australasia's 'green label' initiative for promoting low formaldehyde emissions.

Information of this kind can provide suppliers with a point of differentiation in the marketplace, while also delivering peace of mind to procurers.

When the procurer receives any of the above types of evidence, they have a responsibility to satisfy themselves that they are genuine. This process should include the following simple steps such as checking that the document:

- is an original
- specifies the date on which it was generated
- has not been edited or tampered with in any way
- includes the name, signature and contact details of the person making the conformance claim
- specifies the performance standard(s) against which the product has been tested and is claiming conformance
- clearly states that the product passed the relevant tests and meets the standard(s)
- states any exclusions or limitations on the testing or performance of the product.

6.4.2 Product Marking

In some cases a product is required to be marked or labelled as part of product-specific schemes, regulation or standard. The aim of the marking or labelling is to provide the procurer with readily identifiable information and assurance that the product meets the relevant performance standards. Where such marking or labelling and appropriate standards requirements apply, the existence of the appropriate mark/label is one measure that can help procurers satisfy themselves that a product is fit for purpose.

Markings may be placed directly onto the product, such as required by the WaterMark Scheme for certain plumbing products and permitted by the CodeMark Scheme for certain building products, or may be placed on the packaging of the product such as permitted under the Water Efficiency Labelling Standard Scheme and the CodeMark Scheme.

If you intend to rely on the marking as the means of verification for a particular product, it is important to ensure that you do cite the marking, particularly if the product will be covered as part of the construction work, hiding the label.

Appendix 1 Guide to Industry Conformity Assessment Schemes and Information

Context

There are a number of conformity assessment pathways available to industry, and no one pathway is suitable or possible for the vast array of construction products available. It is also a reality that the various product sectors are at different stages of their journey towards leading practice implementation of conformity assessment schemes.

A number of these industry-supported schemes have been in place for some time and have been effective in lifting the level of information available about product conformity and monitoring the performance of some product sectors. However, it should not be interpreted that they are endorsed by government or that all products in a particular category will be participating in the schemes identified.

Appendix 1 provides an overview of what guidance and conformity assessment schemes are currently available in the different product sectors. By its nature, this will change and this information is designed to be updated over time to include changes or new schemes that become available. For the most up-to-date information for particular products, reference should be made to the appropriate industry associations and product certification bodies for that product sector and other references provided in Appendix 1.

Importantly, readers are advised that for an up-to-date listing of accredited conformity assessment bodies, it is recommended to consult the JAS-ANZ Register (www.jas-anz.org/register) and the NATA website (www.nata.com.au).

Appendix 1 is structured under product sectors, which in turn contain a collection of information on available guidance material and product or product sector compliance schemes. The index on the following page provides a convenient first point to identify the product sectors of interest.

Index

Page

A	Reinforcing and Structural Steel	34
	Australian Steel Institute	35
	Steel Reinforcement Institute of Australia	36
	Australian Technical Infrastructure Committee	37
	National Structural Steelwork Compliance Scheme	38
	Australasian Certification Authority for Reinforcing and Structural Steels	39
	ATIC Scheme 10	40
	ShedSafe	41
B	Cementitious Materials for Concrete	42
	Cement Concrete and Aggregates Australia	43
	Australian Technical Infrastructure Committee	44
	Cementitious Materials Registration Scheme	45
C	Wood Products	46
	Engineered Wood Products Association of Australasia	47
	Plywood and LVL Product Certification Scheme	48
	Particleboard and Fibreboard Product Certification Scheme	49
	Plantation Timber Certification Scheme	50
	Australian Forestry Standard Chain of Custody	51
	Australian Wood Packaging Certification Scheme for Export	52
	Glue Laminated Timber Association of Australia Certification Scheme	53
D	Glazing Products	54
	Australian Window Association	55
	Window Energy Rating Scheme	56
E	Electrical Products	57
	Electrical Equipment Safety System	58
	Electromagnetic Compatibility (EMC) National Equipment Registration System	59
	Greenhouse and Energy Minimum Standards Regulator	60
	Approved Cables Initiative	61
	Solid State Lighting Quality Scheme	62
F	Fire Safety Services	63
	Fire Protection Association Australia	64
	ActivFire Scheme	65
	FirePass Product Listing Scheme	66
G	Plumbing Products	57
	WaterMark	60
H	Insulation Products	69
	Insulated Panel Council Australasia Ltd	70
	CODE	71
	Insulation Australasia Member Compliance Program	72
I	Coating Products	73
	Australian Paint Approval Scheme	74
	Qualicoat Specification	75
J	Building products	76
	CodeMark	77

A Reinforcing & Structural Steel

Products Covered

- Structural steel – hollow sections to AS/NZS 1163
- Structural steel – flat products to AS/NZS 1594
- Structural steel – plate to AS/NZS 3678
- Structural steel – sections to AS/NZS 3679.1 and 3679.2
- Steel reinforcing materials to AS/NZS 4671
- Steel prestressing materials to AS/NZS 4672

Introduction

There are several industry groups associated with steel products. The following schedules set out the separate programs operated by these industry groups. More information on each can be found by visiting the relevant webpage or contacting the organisation directly.

The following steps outline the recommended conformity assessment pathway for construction steels:

1. A Chartered Professional Civil or Structural Engineer (CPEng through Engineers Australia, or equivalent) must specify the Australian Standard/s, in accordance with the NCC, to which the steel product shall conform when supplied.
2. These Australian Standards shall be specifically referenced in the contract documentation for each steel product.
3. The contract documentation shall require at least the following:
 - a. For structural steels, test certificates complying with the relevant testing standards, shall only be accepted from laboratory accredited by NATA or an ILAC MRA signatory with the correct scope of accreditation for testing to the specific product standard/s concerned. For reinforcing and prestressing steels, documented evidence of compliance shall be provided confirming the requirements of Appendix 1 in AS/NZS 4671 or AS/NZS 4672.2 as appropriate.
 - b. All manufacturers of steel products supplied shall have product certification from a product certification body accredited by JAS-ANZ or an IAF MLA signatory with specific, documented expertise in the products and standards certified.
 - c. Structural steelwork shall be fabricated and erected in accordance with AS 4100 *Steel Structures* or AS 5100.6 *Bridge Standard – Steel*. Reinforcing and prestressing steel shall be processed and installed in accordance with AS 2870 *Residential Slabs and Footings Standard*, AS 3600 *Concrete Structures*, or AS 5100.5 *Bridge Standard – Concrete*.
4. Prequalification of the steel contractor shall be demonstrated based on demonstrated capability and certification commensurate with the level of risk.
5. The Engineer shall review, or have reviewed, the product certification and/or test certificates (as appropriate for the type of steel products procured) and confirm they comply with the requirements of the contract documentation, prior to the issue of the Engineer's certificate.
6. A copy of the Engineer's certificate, product certification body certificates and product test certificates (where required) shall be kept by the project manager.
7. Product should not be used in construction without adequate evidence of product conformity.

National Construction Code (NCC) Conformance

☒ Volume One

☒ Volume Two

☐ Volume Three

☐ N/A

Industry Schemes and Guides for Conformity Assessment

Product Conformity Guidance

- Australian Steel Institute
- Steel Reinforcement Institute of Australia
- Australian Technical Infrastructure Committee

Product Certification Schemes

- National Structural Steelwork Compliance Scheme (NSSCS)
- Australasian Certification Authority for Reinforcing and Structural Steels (ACRS)
- Australian Technical Infrastructure Committee ATIC Scheme 10 Requirements for bodies certifying manufacturers of structural steel products
- Shedsafe

Reinforcing & Structural Steel

Australian Steel Institute

Australian Steel Institute (ASI) is the peak national body representing the steel manufacturing and design chain including manufacturers, fabricators and downstream providers, engineers and builders.

<http://steel.org.au/key-issues/compliance>



AUSTRALIAN STEEL INSTITUTE

Product Conformity Guidance

The ASI has been working in the compliance space for a number of years. Along with the promotion of awareness and supporting industry compliance initiatives, ASI is currently in the process of developing a holistic compliance scheme for fabricated and erected structural steelwork, which is underpinned by a Code of Practice and upcoming Australian Standard for the fabrication and erection of structural steelwork.

The ASI supports a rigorous fit-for-purpose, risk-based compliance approach for structural steel and steelwork as an integral component of construction safety, underpinned by the following principles:

1. use of the relevant Australian Standard where available
2. product certification commensurate with the level of risk associated with the fabrication, erection or use of the structure
3. prequalification of the steelwork contractor based on demonstrated capability, and certification commensurate with the level of risk.

The ASI has underwritten development of the National Structural Steelwork Compliance Scheme which is planned to commence in mid-2014. The Scheme is administered separately by Steelwork Compliance Australia.

Scheme or Guide Type

- ☒ Product Management Systems Certification
- ☐ Product Inspection Services
- ☐ Product Certification
- ☐ Product Testing and Sampling Services

Scheme or Guide Features

Refer to individual scheme information sheets

Reinforcing & Structural Steel

Steel Reinforcement Institute of Australia

Steel Reinforcement Institute of Australia (SRIA) is Australia's leading non-profit national organisation providing high-quality technical support and information to the Australian building industry on the use of reinforcing steel in concrete, primarily reinforcing bar and reinforcing mesh.

http://www.sria.com.au/quality_assurance.html



Product Conformity Guidance

SRIA members demonstrate compliance through external independent certification bodies.

Steel Reinforcing Bar and Steel Reinforcing Mesh: Steel Reinforcement as defined by steel reinforcing materials standards AS/NZS 4671 and for design and fabrication AS 3600, AS 5100 and AS 2870.

SRIA members comply with the relevant standards that apply to the reinforcement industry. This may be demonstrated through:

- a. Third party Product Quality Certification to AS/NZS 4671 and all associated standards.
ACRS certification will satisfy this criterion but this is not exclusive.
- b. Documented Quality Management System plus Authority Product Approvals.
International Organisation for Standardisation, ISO 9000 family of standards for quality management systems plus multiple product approvals from State and/or Federal Government construction authorities.

Scheme or Guide Type

- ☐ Product Management Systems Certification
- ☐ Product Inspection Services
- ☐ Product Certification
- ☐ Product Testing and Sampling Services

Scheme or Guide Features

Refer to individual scheme information sheet

Reinforcing & Structural Steel

Australian Technical Infrastructure Committee (ATIC)



Product Conformity Guidance

For specifying 'product conformity' requirements for construction products in government projects, ATIC has been progressively producing a suite of master procurement specifications (ATIC-SPEC), which for 'conformity assessment', will reference the complementing 'ATIC suite of schemes' also being prepared. They are all voluntary and are available in the public domain at: www.apcc.gov.au.

ATIC-SPEC sections are reference documents and each contains a table of 'project specifics' requirements which are copied, inserted and edited into individual project specifications. It is also noted that ATIC-SPEC operates in parallel with the existing Water Services Specification (WS-SPEC).

The template for the ATIC suite of schemes contains three sections:

- Section 1: Requirements for certification bodies
- Section 2: Requirements for manufacturers/suppliers
- Section 3: Clarification for the consistent application of the standard(s), i.e. product conformity.

ATIC Scheme 10 is the first of the proposed ATIC suite of schemes, being part of the ATIC agenda to coordinate technical issues relevant to infrastructure procurement. Other schemes are proposed, including for reinforcing steel, mechanical fasteners, cementitious materials and execution of steelwork.

Scheme or Guide Type

- ☐ Product Management Systems Certification
- ☐ Product Inspection Services
- ☒ Product Certification
- ☐ Product Testing and Sampling Services

Scheme or Guide Features

Refer to individual scheme information sheet

Reinforcing & Structural Steel

National Structural Steelwork Compliance Scheme (NSSCS)

<http://steelworkcompliance.com>



Registered Accreditation Number

Not applicable

Scope of Scheme

Steelwork Compliance Australia (SCA) administers an independent, third party certification program supporting the National Structural Steelwork Compliance Scheme (NSSCS).

The scheme covers fabricated and erected steelwork supplied to Australian materials and design standards.

SCA certifies fabricators, both Australian and overseas based, to a nominated Construction Category (CC), where the CC varies from 1 for simple structures with low hazard to life to 4 for more complex structures and/or high hazard to life. This fit-for-purpose classification is defined in the ASI Fabrication and Erection Code of Practice and is strongly aligned with the building and structure Importance Level defined in the Building Code of Australia (BCA).

The scope of the NSSCS covers structures designed to:

- AS 4100 – Steel structures
- AS/NZS 5100 – Bridge design
- AS/NZS 4600 – Cold-formed steel structures (selected coverage).

Scheme

- ☐ Product Management Systems Certification
- ☐ Product Inspection Services
- ☒ Product Certification
- ☐ Product Testing and Sampling Services

Scheme or Guide Features

- Specialist certification scheme for fabricated and erected steelwork structures to Australian Standards
- Requires fabricators to be certified to a nominated Construction Category
- Supports and simplifies client-based prequalification requirements
- Is open to both Australian fabricators and overseas-based fabricators
- Has strong alignment with compliance requirements implemented in New Zealand

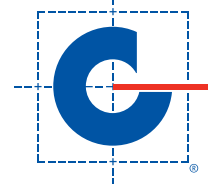
Reinforcing & Structural Steel

Australasian Certification Authority for Reinforcing and Structural Steels (ACRS)

www.steelcertification.com



JAS-ANZ



Registered Accreditation Number

JAS-ANZ – Z5221212AC

Scope of Scheme

The Australasian Certification Authority for Reinforcing and Structural Steels (ACRS) administers an expert, independent, not-for-profit, third-party product certification scheme for the manufacture and processing of reinforcing, pre-stressing and structural steels supplied to Australian and New Zealand materials and design standards.

The ACRS output-focused scheme starts where quality management systems (AS/NZS ISO 9001) auditing and mill test certificates stop. ACRS certificates provide ongoing confidence to designers, specifiers and purchasers that materials supplied to the market have been assessed by steel experts as consistently meeting the requirements of Australian/New Zealand Standards and associated specifications.

ACRS currently certifies more than 40 steel companies in 16 countries, covering the majority of construction steels supplied to Australian/New Zealand Standards. ACRS operates to the latest conformity assessment models and regularly benchmarks against international best practice to ensure the scheme's technical competence, industry relevance and cost effectiveness.

ACRS is accredited by JAS-ANZ to ISO/IEC 17065: 2012: *Conformity assessment – Requirements for bodies certifying products, processes and services*, providing assurance that ACRS technical auditing meets international requirements for competence, consistent operation and impartiality.

Scope of Accreditation

AS/NZS 1163	Cold-formed structural steel hollow sections
AS/NZS 1594	Hot-rolled steel flat products
AS/NZS 3678	Structural steel – Hot-rolled plates, floor plates and slabs
AS/NZS 3679.1	Structural steel – Hot-rolled bars and sections
AS/NZS 3679.2	Structural steel – Welded I sections
AS 3600	Concrete structures (only those clauses relating to the post-production bending of reinforcing steel)
AS 5100.5	Bridge design – Concrete (only those clauses relating to the post-production bending of reinforcing steel)
NZS 3109	Concrete construction (only those clauses relating to the post-production bending of concrete construction) (only those clauses relating to the post-production bending of reinforcing steel)
AS/NZS 4671	Steel reinforcing materials
AS/NZS 4672	Steel prestressing materials – General requirements

Scheme or Guide Type

<input type="checkbox"/> Product Management Systems Certification	<input checked="" type="checkbox"/> Product Certification
<input type="checkbox"/> Product Inspection Services	<input type="checkbox"/> Product Testing and Sampling Services

Scheme or Guide Features

- Specialist conformity scheme for steel construction products to Australian/New Zealand Standards
- Certifies majority of construction steels supplied in Australia and New Zealand
- Expert auditors all qualified metallurgists with 15-years+ experience
- Endorsed by 18 peak Australasian professional and industry bodies, including Austroads, Engineers Australia and Australian Institute of Building Surveyors (AIBS)
- Internationally recognised; certifies over 40 steel companies in 16 countries

Reinforcing & Structural Steel

ATIC Scheme 10: Requirements for bodies certifying manufacturers of structural steel products

<http://www.jas-anz.com.au/australian-technical-infrastructure-committee-scheme-10>



Registered Accreditation Number

Endorsed by JAS-ANZ

Scope of Scheme

ATIC Scheme 10 is the first of the proposed ATIC suite of schemes operating under ISO/IEC 17065. It is a third party certification scheme addressing both product conformity and conformity assessment, and is endorsed by JAS-ANZ as a scheme partner.

The scheme presently covers the following structural steel products:

- cold-formed structural steel hollow sections to AS/NZS 1163
- structural steel – Hot-rolled plates, floor-plates and slabs to AS/NZS 3678
- structural steel to AS/NZS 3679, Part 1: Hot-rolled bars and sections
- structural steel to AS/NZS 3679, Part 2: Welded I sections

ATIC Scheme 10 is used in project procurement specifications by being referenced from the associated ATIC–SPEC Section SP60 Structural Steel Products.

Scheme Type

- ☐ Product Management Systems Certification
- ☐ Product Inspection Services
- ☒ Product Certification
- ☐ Product Testing and Sampling Services

Scheme Features

- Public sector scheme
- Product conformity and conformity assessment fully addressed
- Linked to the master specification, ATIC–SPEC, for preparation of project procurement specs

Reinforcing & Structural Steel

ShedSafe

www.ShedSafe.com.au



Registered Accreditation Number

Not applicable

Scope of Scheme

ShedSafe is the industry benchmark for Australian manufactured cold formed steel sheds. It is a third party certification program intended to assist buyers to be able to have confidence in the engineering, steel products and site specification of the steel shed they are purchasing.

Shed manufacturers are required to demonstrate engineering design principles are consistent with the National Construction Code via an independent design review process. Shed manufacturers are required to complete ongoing audits to ensure compliance with current standards.

ShedSafe shed sellers are required to undertake online training for building specification for site classification and building classes.

ShedSafe is managed by the Australian Steel Institute, Australia's peak steel industry body.

Scheme Type

- ☐ Product Management Systems Certification
- ☐ Product Inspection Services
- ☒ Product Certification
- ☐ Product Testing and Sampling Services

Scheme Features

- Ensures that members manufacture buildings in accordance with Australian Standards
- Designs are maintained consistent with changes to the NCC and Australian Standards
- Clear identification of compliant designs for project managers, specifiers, builders and building surveyors to meet and enforce compliance with the National Construction Code
- Industry-trained staff to provide advice on correct application and suitability for intended site
- Steel building products conforming to Australian Standards

B Cementitious Materials for Concrete

Products Covered

- General purpose and blended cements (as defined in AS 3972-2010)
- Supplementary cementitious materials (as defined in AS 3582, Parts 1, 2 and 3) for use with Portland and blended cement including fly ash, slag and amorphous silica

Introduction

The cement industry operates under a disciplined regime of testing and analysis to assure customers of the performance and quality of supplied materials. Manufacturers operate NATA accredited laboratories which analyse samples of in-process and despatched product. These analytical methods are generally prescribed in Australian Standards or relevant international norms.

The level of process control necessary to meet these industry standards is particularly high given the nature of the cement manufacturing process. The chemical and mineralogical consistency needed for cement to actually perform to high specifications requires exemplary process control in cement manufacturing, and needs to be ongoing.

The industry also participates in national and international testing proficiency programs, ensuring the accuracy of analysis and information.

A signed compliance certificate (Supplier's Declaration of Conformance – SDoC) covering batches of despatched product, specified as on a volume or time basis.

Supplementary cementitious materials (SCM) are generally a co-product of other industrial processes. Again, in-process sampling and sampling of product prior to despatch ensure the compliance of the materials with specified requirements and inform the conformance of those materials.

When requested by the purchaser, the SCM supplier shall issue a test certificate.

National Construction Code (NCC) Conformance

☐ Volume One

☐ Volume Two

☐ Volume Three

☒ N/A

Industry Schemes and Guides for Conformity Assessment

Product Conformity Guidance

- Cement Concrete Aggregates Australia
- Australian Technical Infrastructure Committee

Product Certification Schemes

- Cementitious Materials Registration Scheme (CMRS)

Cementitious Materials for Concrete

Cement Concrete and Aggregates Australia



Cement Concrete and Aggregates Australia (CCAA) is the peak national body representing the interests of Australia's \$6 billion a year heavy construction materials industry.

www.ccaa.com.au

Registered Accreditation Number

Not applicable

Product Conformity Guidance

The cement industry operates a scheme based on testing and calibration laboratories providing product testing and sampling services.

Product conformity is prescribed in Australian Standard AS 3972 – *General purpose and blended cements*.

The method for determining conformity assessment is described in the Introduction.

A certified compliance certificate (Supplier's Declaration of Conformance – SDoC) is available from the supplier describing the compliance of product with the relevant provisions of AS 3972 – *General purpose and blended cements*.

Scheme or Guide Type

- ☐ Product Management Systems Certification
- ☐ Product Inspection Services
- ☐ Product Certification
- ☒ Product Testing and Sampling Services

Scheme or Guide Features

- Traceability of manufactured product
- Support of local standards and specifications
- Accuracy and precision of product testing methods through regular proficiency testing
- Industry supply chain ensures regular and timely critique of product performance

Cementitious Materials for Concrete

Australian Technical Infrastructure Committee



Product Conformity Guidance

For specifying 'product conformity' requirements for construction products in government projects, ATIC has been progressively producing a suite of master procurement specifications (ATIC-SPEC), which for 'conformity assessment' will reference the complementing ATIC suite of schemes also being prepared. They are all voluntary and are available in the public domain.

ATIC-SPEC sections are reference documents and each contains a table of 'project specifics' requirements which are copied, inserted and edited into individual project specifications. It is also noted that ATIC-SPEC operates in parallel with the existing Water Services Specification (WS-SPEC).

The Cementitious Materials Registration Scheme (CMRS) is an interim solution for cementitious products and is an important element of the ATIC agenda to coordinate technical issues relevant to public infrastructure procurement. CMRS is maintained for use by government agencies across Australia, and the Registration List is available in the public domain, free of charge.

Scheme or Guide Type

- ☐ Product Management Systems Certification
- ☐ Product Inspection Services
- ☒ Product Certification
- ☐ Product Testing and Sampling Services

Scheme or Guide Features

Refer to individual scheme information sheet

Cementitious Materials for Concrete

Australian Technical Infrastructure Committee Cementitious Materials Registration Scheme (CMRS)



Registered Accreditation Number

Not applicable

Scope of Scheme

The Cementitious Materials Registration Scheme (CMRS) is a second-party, pre-registration scheme for cementitious materials for concrete managed by ATIC. It is currently administered by the Roads and Maritime Services Materials Technology Laboratory (RMS Lab).

CMRS covers:

- General purpose and blended cements to AS 3972
- Supplementary cementitious materials for use with Portland and blended cement
- Part 1: Fly ash to AS 3582.1
- Part 2: Slag – Ground granulated iron blast furnace to AS 3582.2
- Part 3: Amorphous silica to AS/NZS 3582.3.

CMRS is used in project procurement specifications by being referenced from the associated ATIC–SPEC Section SP43 Cementitious Materials for Concrete, Clause 2.3, and is an interim solution for conformity assessment as it only partially specifies the requirements. To assist applying CMRS to projects, simply copy the project specifics from Section SP43 and then insert and edit in each project specification.

Section SP43, Clause 4.8 also gives the designations and a detailed description of the product types in the CMRS Registered Products List.

Scheme Type

- ☐ Product Management Systems Certification
- ☐ Product Inspection Services
- ☐ Product Certification
- ☒ Product Testing and Sampling Services

Scheme Features

- Public sector scheme
- Linked to the master specification, ATIC–SPEC for preparation of procurement specifications
- Product conformity is fully addressed and conformity assessment is partially addressed

C Wood Products

Products Covered

- Structural sawn scantling timber
- Engineered Wood Products including Plywood, Laminated Veneer Lumber (LVL), Particleboard, Fibreboard and Sawn Timber
- All wood fibre based products
- Timber used in packaging materials - usually for international transport
- Glued Laminated Timber (AS/NZS 1328.1).
- Finger joints for structural applications (AS/NZS 8008 (Int).
- Finger joints for non-structural applications (AS 5068).
- Composite timber decking (ASTM D7032).
- Timber I-Joists and a range of company specific glued timber products

Introduction

The wood products industry has established a number of voluntary product certification schemes and promotes these to members in an effort to maintain a high level of quality and performance of the products supplied.

The engineered wood product schemes are focused on in-mill auditing of quality systems and process control to ensure quality is built into the product, and that the finished product meets the requirements of the AS and AS/NZS product standards in all regards. The schemes also have ongoing monitoring of product properties such as strength, stiffness, bonding and formaldehyde emissions. The plywood, LVL and sawn timber schemes also have routine marketplace surveillance.

There are several industry groups associated with wood and timber products. These industry groups operate a range of conformance schemes and guidelines aimed at ensuring the quality of wood products supplied to the Australian building and construction sector are fit for purpose.

The following steps outline the recommended conformity assessment pathway for construction wood products:

1. The design documents should specify the type and grade of timber product which has been called up in the design
2. The wood products must be stamped in compliance with the relevant Australian Standard(s). Product should not be used in construction without adequate evidence of product conformity.
3. The Engineer shall review, or have reviewed the product certification and/or test certificates (as appropriate for the type of wood products procured) and confirm they comply with the requirements of the contract documentation, prior to the issue of the Engineer's certificate.
4. A copy of the Engineer's certificate, product certification body certificates and product test certificates (where required) shall be kept by the project manager.

National Construction Code (NCC) Conformance

☒ Volume One

☒ Volume Two

☐ Volume Three

☐ N/A

Industry Schemes and Guides for Conformity Assessment

Product Conformity Guidance

- Engineered Wood Products Association of Australasia

Product Certification Schemes

- EWPAA Plywood and LVL Scheme
- EWPAA Particleboard and MDF Scheme
- Plantation Timber Certification Scheme
- Australian Wood Packaging Certification Scheme
- Australian Forestry Standard Chain of Custody Scheme
- Glue Laminated Timber Association of Australia Certification Scheme

Wood Products

Engineered Wood Products Association of Australasia

The Engineered Wood Products Association of Australasia (EWPAA) represents a range of traditional plywood products and a wide range of modern engineered wood products used in both commercial and residential structure.

<http://www.ewp.asn.au>



Registered Accreditation Number

JAS-ANZ Accredited Body Z4351009AN

Product Conformity Guidance

A major activity of the EWPAA is to provide a number of JAS-ANZ Accredited Product Certification services to members including:

- EWPAA Plywood and LVL Scheme
- EWPAA Particleboard and MDF Scheme
- Plantation Timber Certification Scheme
- Australian Wood Packaging Certification Scheme
- Australian Forestry Standard Chain of Custody Scheme.

The EWPAA also applies the requirements of ISO Guides 23, 27, 28 and 44.

Engineered wood product schemes are focused on in-mill auditing of quality systems and process control to ensure quality is built into the product and that finished product meets the requirements of the AS and AS/NZS product standards in all regards. The schemes also have ongoing monitoring of product properties such as strength, stiffness, bonding and formaldehyde emissions. The plywood, LVL and sawn timber schemes also have routine marketplace surveillance.

Scheme or Guide Type

- ☐ Product Management Systems Certification
- ☐ Product Inspection Services
- ☒ Product Certification
- ☐ Product Testing and Sampling Services

Scheme or Guide Features

Refer to individual scheme information sheets.

Wood Products

EWPAA Plywood and LVL Product Certification Scheme

<http://www.ewp.asn.au/register>



Registered Accreditation Number

JAS-ANZ Accredited Body Z4351009AN

Scope of Scheme

The EWPAA Plywood and LVL Product Certification Scheme is voluntary.

Any bona fide manufacturer in the Australasian region may enter provided it meets the qualification requirements. However, to use the certification marks, organisations must be certified against the requirements specified in the rules documents. These requirements are mandatory.

The products covered by the EWPAA Plywood and LVL Certification Scheme are:

- plywood - structural (AS/NZS 2269), marine (AS/NZS 2272), exterior (AS/NZS 2271) and interior (AS/NZS 2270)
- blockboard
- laminated veneer lumber (LVL) (AS/NZS 4357)
- formwork plywood (AS 6669)

Bridgewood, I-beams and a range of company specific 'special' products are also to be covered by the scheme using a combination of the requirements of the above Australian/New Zealand Standards and the manufacturing specification provided at the time of certification. Manufacturing specifications for such products are available on request from the EWPAA.

Scheme Type

- ☐ Product Management Systems Certification
- ☐ Product Inspection Services
- ☒ Product Certification
- ☐ Product Testing and Sampling Services

Scheme Features

- Focuses heavily on in-mill process control to ensure quality is built into the products
- Mills are audited on a six-monthly basis
- Mills are required to submit weekly samples to the EWPAA's NATA-accredited laboratory for ongoing product property monitoring, including stiffness, strength, bonding and formaldehyde emissions
- Market surveillance is conducted as another level of surveillance
- Mills are required to have fully documented and maintained quality and calibration systems

Wood Products

EWPAA Particleboard and Fibreboard Product Certification Scheme

<http://www.ewp.asn.au/register>



Registered Accreditation Number

JAS-ANZ Accredited Body Z4351009AN

Scope of Scheme

The EWPAA Particleboard and Fibreboard Product Certification scheme is voluntary. Any *bona fide* manufacturer in the Australasian region may enter provided it meets the qualification requirements. However, to use the certification marks, organisations must be certified against the requirements specified in the rules documents. These requirements are mandatory.

The products covered under the EWPAA Product Certification Scheme are Fibreboard and Particleboard, including moisture-resistant (MR) fibreboard and particleboard manufactured in accordance with AS/NZS 1859 series *Reconstituted wood based panels* and AS/NZS 1860.1: 2002 *Part 1 Particle Board Flooring* and other products and standards as agreed from time to time by the EWPAA.

Scheme Type

- ☐ Product Management Systems Certification
- ☐ Product Inspection Services
- ☒ Product Certification
- ☐ Product Testing and Sampling Services

Scheme Features

- Focuses heavily on in-mill process control to ensure quality is built into the products
- Mills are audited annually
- Mills are required to submit monthly samples to the EWPAA's NATA-accredited laboratory for ongoing product property monitoring, including stiffness, strength, internal bond, thickness swell, surface soundness and formaldehyde emissions
- The scheme requires fully documented and maintained quality and calibration systems

Wood Products

EWPAA Plantation Timber Certification Scheme (PTCS)

<http://www.ewp.asn.au/register>



Registered Accreditation Number

JAS-ANZ Accredited Body Z4351009AN

Scope of Scheme

The Plantation Timber Certification Scheme is voluntary.

Any *bona fide* manufacturer in Australia may enter provided it meets the qualification requirements. However, to use the certification marks, organisations must be certified against the requirements specified in the rules documents. These requirements are mandatory.

Standard products covered by the EWPAA PTCS are structural softwood in accordance with AS/NZS 1748 series *Timber – Solid – Stress grades for structural purposes* and AS 2858 *Timber – Softwood*.

Non-standard products shall be covered at the discretion of EWPAA.

Scheme Type

- ☐ Product Management Systems Certification
- ☐ Product Inspection Services
- ☒ Product Certification
- ☐ Product Testing and Sampling Services

Scheme Features

- Focuses on in-mill process control to ensure quality is built into the products
- Mills are audited on a six-monthly basis
- Mills are required to conduct annual checks of their grading verification methods. The check shall comply with the requirements of Section 6.3 of AS/NZS 4490 and be performed at least once in each 12-month period
- Market surveillance is conducted every six months as another level of surveillance
- The scheme requires fully documented and maintained quality and calibration systems

Wood Products

EWPA Australian Forestry Standard (AFS) Chain of Custody (CoC)

<http://www.forestrystandard.org.au/certified-organisations>

<http://www.ewp.asn.au/register>



Registered Accreditation Number

JAS-ANZ Accredited Body Z4351009AN

Scope of Scheme or Guide

The objective of the Australian Forestry Standard Chain of Custody (AFS CoC) scheme is to provide all suppliers in the wood or forest products certification chain with a credible system for tracking such products originating from forests that have been certified to AS 4708. These products may also be sourced from other forests managed under schemes recognised by AFS Ltd as substantially equivalent to the Australian Forest Certification Scheme.

The scheme covers all phases of ownership such as harvesting, transportation, primary and secondary processing, manufacturing, re-manufacturing, distribution and sales.

The scheme is voluntary – any organisation in Australia may enter provided it meets the qualification requirements. However, to use the certification marks, organisations must be certified against the requirements specified in the rules documents. These requirements are mandatory.

This scheme aims to reassure end-users of timber products that the timber has been sourced from sustainably managed forests and that there is a process of tracking this material from the forest right through the supply chain. This tracking is done via third party certification of each stage along the supply chain.

The scheme requires annual audits of quality systems, processes and records to ensure requirements of the AS 4707 continue to be met.

Scheme or Guide Type

- ☐ Product Management Systems Certification
- ☐ Product Inspection Services
- ☒ Product Certification
- ☐ Product Testing and Sampling Services

Scheme or Guide Features

- Annual audits of each organisation's quality systems, processes and records to ensure continuing compliance with AS 4707
- The scheme requires fully documented and maintained quality systems

Wood Products

EWPAA Australian Wood Packaging Certification Scheme for Export (AWPCS)

<http://www.daff.gov.au/biosecurity/export/wood-packaging>

<http://www.ewp.asn.au/register>



Registered Accreditation Number

JAS-ANZ Accredited Body Z4351009AN

Scope of Scheme

This scheme ensures that timber products used in wood packaging material have been treated in a manner (usually heat treatment) that removes the risk of pests or diseases being spread through transportation. It involves six-monthly in-mill auditing of quality systems, processes and records to ensure compliance with the ISPM (International Standards For Phytosanitary Measures) 15 standard.

This scheme applies to the certification of wood packaging material for use in export consignments and is intended for use by Australian treatment providers, wood packaging manufacturers and the certification body (EWPAA). The EWPAA only provides AWPCS certification for facilities utilising the heat treatment method.

The scheme is voluntary – any organisation in Australia may enter provided it meets the qualification requirements. However, to use the certification marks, organisations must be certified against the requirements specified in the rules documents. These requirements are mandatory.

Scheme Type

- ☐ Product Management Systems Certification
- ☐ Product Inspection Services
- ☒ Product Certification
- ☐ Product Testing and Sampling Services

Scheme Features

- Mills are audited on a six-monthly basis which include a complete review of all facility operations and procedures to verify that the certified facility continues to meet the requirements of the AWPCS
- The scheme requires fully documented and maintained quality systems

Wood Products

Glue Laminated Timber Association of Australia Certification Scheme

<http://www.gltaa.com.au>



Registered Accreditation Number

Not applicable

Scope of Scheme

The Glue Laminated Timber Association of Australia (GLTAA) Product Certification Scheme is a voluntary industry scheme.

The products covered by the GLTAA Scheme are:

- Glued Laminated Timber (AS/NZS 1328.1).
- Finger joints for structural applications (AS/NZS 8008 (Int)).
- Finger joints for non-structural applications (AS 5068).
- Composite timber decking (ASTM D7032).
- Timber I-Joists and a range of company specific glued timber products are also to be covered by the scheme using a combination of the requirements of the above Australian/New Zealand Standards and the manufacturing specification provided at the time of certification. Manufacturing specifications for such products are available on request from the GLTAA.

The GLTAA product certification process consists of the following major elements:

- Adoption of a quality assurance system based on AS3902 with adaptation to individual plant process capabilities.
- Establishment of plant process capabilities through a qualification testing process. The process capabilities are dependent on lamination end joint configuration, base raw material, etc. This establishes the mechanical properties of the glulam manufactured in plant conditions.
- The continued performance of glulam is verified by in-plant process controls on a daily basis.
- Further performance verification is gained through regular audits by the external auditors appointed by the GLTAA.
- Accredited manufacturing plants are issued with a certificate upon qualification and accreditation and are subsequently permitted to use the GLTAA mark. The certification can be withdrawn at the discretion of the GLTAA, should ongoing audits establish non-conformance within the quality assurance system.
- The quality assurance system is regarded as one of the best in the industry. With proper management, ongoing improvements are achieved in controlling quality and therefore cost of production.

The GLTAA product certification and Quality Assurance Program is detailed in the following documents:

- | | |
|---|------------------------------------|
| • AS1328 – 1991 Draft Australian Product Standard | • GLTAA 1/91 Inspection Manual |
| • GLTAA 4/91 Industry Product Standard | • GLTAA 3/91 Inspection Procedures |

All Glulam products which are quality assured by processes detailed in these documents will be branded, stamped or marked with the GLTAA Quality Mark.

Scheme Type

- | | |
|---|--|
| <input type="checkbox"/> Product Management Systems Certification | <input checked="" type="checkbox"/> Product Certification |
| <input checked="" type="checkbox"/> Product Inspection Services | <input type="checkbox"/> Product Testing and Sampling Services |

Scheme Features

- Focuses heavily on manufacturing process control to ensure quality is built into the products
- Manufacturing plants are audited on a (2-6) monthly basis depending on the outcome of the auditing process
- Manufacturing plants are required to prepare samples randomly taken from production to undertake on going verification of product properties, including bending, stiffness and durability
- Manufacturing plants are required to have fully documented and maintained quality and calibration systems

D Glazing Products

Products Covered

- Windows and Glazed Doors (as defined in AS 2047)
- Glass (as defined in AS 1288)
- Safety Glass (as defined in AS/NZS 2208)

Introduction and Scope of Application

Glazing is defined by the NCC as: “a transparent or translucent element and its supporting frame located in the envelope, and includes a window and glazed door”.

The following steps outline the recommended conformity assessment pathway for windows and glazed doors in all classes of buildings.

1. The purchaser of the systems or products (site engineer, architect, building designer, builder, owner-builder) must specify the Australian Standard/s and appropriate wind loads, in accordance with the NCC, to which the glazing shall be supplied.
2. These Australian Standards shall be specifically referenced in the contract documentation for each glazed product.
3. The contract documentation shall require at least the following:
 - a. test certificates complying with the relevant testing standards; these shall only be accepted from a laboratory accredited by NATA or an ILAC MRA signatory with the correct scope of accreditation for testing to the specific product standard/s concerned
 - b. all suppliers/fabricators of glazed products supplied shall have a certificate or report from a product certification body accredited by JAS-ANZ or or an IAF MLA signatory, or from an inspection body accredited by either JAS-ANZ or NATA or ILAC MRA signatory
 - c. glazed products shall be fabricated in accordance with the details submitted and approved by the testing laboratory and appended to the report.
4. Labels must be placed on all glazed products in housing, and compliance certificates provided for all glazed products in all other residential and commercial buildings.
5. A copy of the compliance certificates, product certification body certificates and product test certificates shall be kept by the project manager.
6. Glazed products should not be used in construction without adequate evidence of product conformity.

National Construction Code (NCC) Conformance

☒ Volume One

☒ Volume Two

☐ Volume Three

☐ N/A

Industry Schemes and Guides for Conformity Assessment

Product Conformity Schemes

- AWA Member Accreditation Scheme
- AWA Window Energy Rating Scheme

Glazing Projects

Australian Window Association

Member Accreditation Scheme

www.awa.org.au



Registered Accreditation Number

NATA Accredited Inspection Agency no. 13739

Scope of Scheme

The Australian Window Association administers a Member Accreditation Scheme providing an expert, independent, not-for-profit, third party product inspection scheme for the manufacture and fabrication of type-tested glazed products supplied to Australian materials and design Standards, including assessments and conformity to AS 2047, AS 1288, AS/NZS 2208 and AS 3959. The scheme is available to AWA members as part of their membership.

AWA operates on the latest conformity assessment models and regularly benchmarks against international best practice to ensure the scheme's technical competence, industry relevance and cost effectiveness.

The AWA Scheme is accredited by NATA to ISO/IEC 17020.

The Scheme is voluntary and covers Building Products Fabrication process inspection Code(s): QWA AUD-012, QWA AUD-125A Windows (as defined by AS 2047) for construction to meet types and designs concerning structural properties, glazing, operability, weather performance, bushfire resistance and energy rating.

AWA currently audits and accredits more than 500 glazing/window companies in three countries.

Scheme Type

- ☐ Product Management Systems Certification
- ☒ Product Inspection Services
- ☐ Product Certification
- ☒ Product Testing and Sampling Services

Scheme Features

- Ensures that members manufacture their products in accordance with the tested product report
- Continuously verifies that product ratings and labelling requirements are maintained to provide meaningful purchaser information for comparison of a product's performance
- Enables architects, specifiers, builders and building surveyors to meet and check compliance with the National Construction Code
- Simplifies the performance selection by a systematic approach
- Shows a purchaser that a quality assurance process was employed on his behalf

Glazing Projects

The Window Energy Rating Scheme (WERS) AWA Member Accreditation Scheme

www.wers.net



Registered Accreditation Number

NATA Accredited Inspection Agency no. 13739

Scope of Scheme

The Window Energy Rating Scheme (WERS) operates a voluntary independent, third party auditing service for members in accordance with the procedures of the Australian Fenestration Rating Council (AFRC). The audit scheme provides third party verification on product assessment and certification of the energy efficiency of glazing products for use in the National Construction Code.

The results of the WERS are supplied through a certified product directory of approved products for WERS members, architects, builders, specifiers and building surveyors for verification of glazing system performance results.

The WERS membership also includes a member accreditation scheme for inspection of glazing products.

The WERS Member Accreditation Scheme is owned and administered by the Australian Window Association. WERS provides an expert, independent, not-for-profit, third party product inspection scheme for the manufacture and fabrication of type-tested glazed products supplied to Australian materials and design Standards, including assessments and conformity to AS 2047, AS 1288, AS/NZS 2208 and AS 3959. The scheme is available to WERS members as part of their membership.

AWA operates on the latest conformity assessment models and regularly benchmarks against international best practice to ensure the scheme's technical competence, industry relevance and cost effectiveness.

The AWA scheme is accredited by NATA to ISO/IEC 17020.

Scheme Type

- ☐ Product Management Systems Certification
- ☒ Product Inspection Services
- ☒ Product Certification
- ☒ Product Testing and Sampling Services

Scheme Features

- Ensures that members manufacture their products in accordance with the tested product report
- Continuously verifies that product ratings and labelling requirements are maintained to provide meaningful purchaser information for comparison of a product's performance
- Enables architects, specifiers, builders and building surveyors to meet and check compliance with the National Construction Code
- Simplifies the performance selection by providing a systematic approach
- Shows a purchaser that a quality assurance process was employed
- Ensures energy ratings of glazing products are conducted to an internationally recognised, consistent set of procedures and on a level playing field

Electrical Products

Products Covered

- Electrical and electronic equipment including:
 - equipment covered by the electro-magnetic compatibility requirements;
 - electrical safety of residential electrical equipment;
 - energy efficiency of industrial electric motors, various appliances and lighting equipment;
 - electrical cabling
 - LED lighting equipment

Introduction

The Electrical Regulatory Authorities Council (ERAC) is the peak body of electrical safety regulators in Australia and New Zealand. ERAC acts to ensure electrical safety regulatory systems are contemporary and harmonised wherever possible.

Electrical Safety Regulators in Australia and New Zealand, through their participation in ERAC, have created a central portal for identifying all certificates of electrical equipment issued under electrical safety laws in Australia.

It is the intention for this database to list all certificates issued by electrical safety regulators in Australia and New Zealand, as well as certificates issued by private certification bodies that operate in accordance with the Equipment Safety Rules of the Electrical Equipment Safety System.

The same portal is used by the Australian Communications and Media Authority to identify all Australian electrical equipment suppliers who are required to register under Australia's electro-magnetic compatibility regulations.

The Equipment Energy Efficiency (E3) Program is a joint initiative of the Australian, State and Territory, and New Zealand Governments aimed at improving the energy efficiency of appliances and products, and thereby reducing energy demand, running costs for households and businesses and greenhouse gas emissions.

In scope products are regulated for Minimum Energy Performance Standards (MEPS), energy rating labelling, or both, to achieve these outcomes. The Australian and New Zealand regulators jointly provide a central registration facility for lodging registration applications for regulated products that will be supplied in either or both countries.

As well as the above mandatory regulatory schemes, industry also runs voluntary third party accreditation schemes for electric cable and LED lighting products.

National Construction Code (NCC) Conformance

☐ Volume One ☐ Volume Two ☐ Volume Three ☒ N/A

Schemes and Guides for Conformity Assessment

- Electro-Magnetic Compatibility (EMC) National Equipment Registration System (mandatory)
- Electrical Equipment Safety System (mandatory)
- Greenhouse and Energy Minimum Standards (GEMS) Determinations (in Australia) or the Energy Efficiency (Energy Using Products) Regulations 2002 (in New Zealand) (mandatory)
- Approved Cables Initiative (ACI) (voluntary)
- Solid State Lighting Quality Scheme (voluntary)

Electrical Products

Electrical Equipment Safety System (EESS)

<https://equipment.erac.gov.au/Public/>



Registered Accreditation Number

Not applicable

Scope of Scheme

The Electrical Equipment Safety System (EESS) is currently managed by the Electrical Regulatory Authorities Council (ERAC) and applied by participating electrical safety regulators. The EESS commenced on 1 March 2013 in Queensland and Tasmania and Western Australia have recognised the EESS. Other jurisdictions are currently progressing or considering their implementation of the EESS and New Zealand is considering complementary legislation.

The EESS covers in-scope electrical equipment which is low voltage electrical equipment that is rated at:

- Greater than 50 V AC RMS or 120V ripple-free DC (Extra-low voltage) and
- Less than 1000V AC RMS or 1500V ripple-free DC (high voltage).

In-scope electrical equipment is equipment that is designed, or marketed as suitable for household, personal or similar use. All in-scope electrical equipment is within one of three risk levels (level 1, level 2 or level 3).

Under the EESS all suppliers of “in-scope” equipment (“responsible suppliers”) must be registered before placing equipment onto the market. In addition electrical equipment must be registered with level of detail of registration dependant on the risk level classification of the equipment. Suppliers must also declare that all equipment they supply conforms to the relevant electrical safety standard.

In the EESS level 3 in-scope electrical equipment must have a Certificate of Conformity. This is obtained from an electrical safety regulator or private certifier (accredited by a regulator). Level 2 or level 1 in-scope electrical equipment may also have a voluntary Certificate of Suitability. All Certificates are issued in accordance with the Equipment Safety Rules and rely on accredited laboratory type testing to the relevant standard.

Under the EESS, all Level 1, 2 or 3 electrical equipment offered for sale in Australia and New Zealand by Responsible Suppliers must be marked with the Regulatory Compliance Mark (RCM), as illustrated above.

The RCM should be placed in accordance with AS/NZS 4417.1 (i.e. generally on the external surface of the electrical equipment as near as possible to the model identification). The use of the RCM on equipment is only permitted if the equipment is in conformance with the EESS.

Scheme Type

- | | |
|---|--|
| <input type="checkbox"/> Product Management Systems Certification | <input checked="" type="checkbox"/> Product Certification |
| <input type="checkbox"/> Product Inspection Services | <input type="checkbox"/> Product Testing and Sampling Services |

Scheme Features

- A template for nationally consistent, electrical equipment safety legislation throughout Australia and New Zealand aimed to increase consumer safety
- A national database where all suppliers and certain types of equipment must be registered prior to being offered for sale. This will allow equipment to be easily traced to its supplier and act as a gateway to the legal supply of electrical equipment in Australia and New Zealand
- Risk-based classification of equipment into three levels (Level 3, Level 2 and Level 1) with different requirements for each level
- A self-funding, user-pays system where registration fees fund improved compliance, surveillance and post-market enforcement activities
- Registration of a ‘Responsible Supplier’, who is a manufacturer or importer of in-scope electrical equipment and who is a legal entity in Australia or New Zealand, and who has the responsibility for ensuring the safety of the electrical equipment it sells in participating jurisdictions
- Technical safety requirements have not changed under the EESS, but tighter evidence of conformity is required for some items.

Electrical Products

Electromagnetic Compatibility (EMC)

National Equipment Registration System

<https://equipment.erac.gov.au/Registration/UserSearch.aspx?rr=Responsible&atn=public>



Registered Accreditation Number

Not applicable

Scope of Scheme

The Australian Communications and Media Authority (ACMA) is responsible for regulating telecommunications, broadcasting, radiocommunications and the internet. Under the Radiocommunications Act 1992, ACMA is responsible for regulating electromagnetic compatibility (EMC).

The EMC regulatory arrangements aim to minimise electromagnetic interference from electrical and electronic devices that may diminish the performance of other electrical devices or disrupt essential communications. This is increasingly important due to the rapid growth in the use of electronic systems and digital technology in commercial and domestic environments.

The regulatory arrangements for electrical and electronic devices, vehicles and devices with internal combustion engines require that suppliers ensure that these items comply with mandatory technical standards before they are supplied to the Australian market.

In addition, the arrangements also impose certain compliance labelling and record-keeping requirements. Before applying the RCM compliance label, suppliers must ensure that the device complies with any applicable requirements that are outlined in the EMC Labelling Notice and the EMC Standard. Suppliers must register on the national supplier's database before use of the RCM compliance label is permitted.

The aim of the EMC regulatory arrangements is to prevent the supply or introduction to the Australian market of devices that could have an adverse impact on users of the radiofrequency spectrum or the performance of other electrical/electronic devices. Suppliers must ensure that their products comply with all applicable technical standards, are correctly labelled and that they have all necessary compliance documents before supplying to the Australian market.

Scheme Type

- ☐ Product Management Systems Certification
- ☒ Product Inspection Services
- ☐ Product Certification
- ☐ Product Testing and Sampling Services

Scheme Features

In order to help the Australian electrical industry supply chain to have confidence in the electrical cables that they are using, the ACA has introduced the ACI logo (as shown). Presence of this logo on electric cables gives the purchaser the following assurances:

- registration of the equipment supplier on the ERAC / ACMA National Database;
- product testing, record keeping, product labelling and declarations of conformity asserting that the devices supplied meet the applicable standards;
- market surveillance, supplier audit, product testing and enforcement provisions including fines and imprisonment for failing to meet the requirements or providing false and misleading information to a Commonwealth entity.

Electrical Products

Greenhouse and Energy Minimum Standards (GEMS)

www.energyrating.gov.au



Greenhouse and Energy
Minimum Standards Regulator

Registered Accreditation Number

Not applicable

Scope of Scheme

In scope electrical products are regulated under the Greenhouse and Energy Minimum Standards Act 2012 in Australia, and the Energy Efficiency (Energy Using Products) Regulations 2002 in New Zealand. Requirements are set for Minimum Energy Performance Standards (MEPS), energy rating labelling, or both, usually by calling up requirements from the relevant Australian/New Zealand standards.

Regulated products must comply with these requirements, and be registered, before they can be supplied or offered for supply in either country. Compliance obligations apply to anyone in the supply chain who supplies or offers to supply a regulated product to another person or firm, including to manufacturers, importers, wholesalers, retailers, tradespeople or installers. The 'registrant' of the product in Australia may be the manufacturer, importer, or another entity with an appropriate connection to the supply of the product, and off-shore registrants are accepted. Products can only be registered in New Zealand by a New Zealand resident company.

Minimum Energy Performance Standards (MEPS)

MEPS are mandatory for a range of products in Australia and New Zealand. MEPS requirements specify the minimum level of energy performance that appliances, lighting and electrical equipment must meet or exceed before they can be offered for sale or used for commercial purposes.

The Energy Rating Label (ERL)

The Energy Rating Label (ERL) is a mandatory comparative energy label that provides consumers with product energy performance information at point-of-sale on a range of appliances. Attached to each appliance, the ERL allows comparison between similar appliance models through a star rating of between one and six stars, or one and ten stars for certain products (the greater the number of stars, the higher the efficiency), and the appliance's annual energy consumption.

Links to the Australian GEMS determinations for each regulated product, and the New Zealand regulations, can be found on the Equipment Energy Efficiency (E3) Program website. A guide to understanding the ERL and information about which appliances are required to display the ERL is also available on this website.

Scheme Type

- | | |
|---|--|
| <input type="checkbox"/> Product Management Systems Certification | <input checked="" type="checkbox"/> Product Certification |
| <input type="checkbox"/> Product Inspection Services | <input type="checkbox"/> Product Testing and Sampling Services |

Scheme Features

- Harmonised, consistent requirements across all Australian and New Zealand jurisdictions
- A national database in which all products must be registered before being offered for supply or used for commercial purposes.
- A partial cost recovery system where registration fees fund application assessment and robust compliance monitoring and post-market enforcement activities.
- Identification of a 'registrant' for products, who is a manufacturer, importer or other entity with a connection to the supply of the product, and who has responsibilities for the compliance of the product.

Electrical Products

Approved Cables Initiative (ACI)

www.australiancablemakers.com/committees/aci-approved-cable-initiative



Registered Accreditation Number

Not applicable

Scope of Scheme

The Approved Cables Initiative was established to address the use of unsafe, non-compliant and counterfeit cable in the Australian marketplace. The ACI is administered by the Australian Cablemakers Association.

With industry and regulator support, the ACI is taking a proactive and hard-hitting approach to monitor and educate the Australian electrical industry supply chain – from manufacturers, importers, wholesalers and contractors to end-users.

The main focus of the ACI is to ensure that electrical cables available in the Australian market are fully compliant with the relevant Australian Standard/s.

Any cable failing to comply with Australian Standards will be reported to the relevant State or Federal authorities who have the power to act against these products in the interest of community safety.

There are various Australian Standards to which electrical cables are required to comply depending upon the application.

Suppliers are required to operate and maintain testing regimes that are defined in the relevant standards that include type tests to ensure the performance of the product meets the requirements defined in the standard, which then have to be supported by ongoing routine and sample test programmes to confirm ongoing compliance.

Scheme Type

- ☐ Product Management Systems Certification
- ☐ Product Inspection Services
- ☐ Product Certification
- ☒ Product Testing and Sampling Services

Scheme Features

In order to help the Australian electrical industry supply chain to have confidence in the electrical cables that they are using, the ACA has introduced the ACI logo (as shown). Presence of this logo on electric cables gives the purchaser the following assurances:

- the electrical cable is fully compliant to the relevant Australian Standards
- the electrical cable has passed all the relevant electrical and mechanical testing
- the cable has been manufactured in Australia
- the manufacturing facility complies with all work health and safety legislation

Electrical Products

Solid State Lighting Quality Scheme

<http://www.lightingcouncil.com.au/site/ssl/overview.php>



Registered Accreditation Number

Not applicable

Scope of Scheme

Solid State Lighting (SSL) technology – also known as LEDs, or light emitting diodes - holds considerable promise to substantially increase energy efficiency across a range of lighting applications. The rapid growth of SSL has resulted in an increasing number of new products on the Australian market. While there are some excellent SSL products available, the Australian market is also being subjected to underperforming product that does not live up to suppliers' claims. This underperforming product has the potential to delay or otherwise compromise the substantial energy savings potential of SSL.

For these reasons Lighting Council Australia has instituted a quality scheme for SSL based on a scheme introduced by the US Department of Energy in conjunction with the US lighting industry.

The SSL Quality Scheme is a voluntary industry third party scheme providing confidence to the market that a luminaire carrying the Scheme's label matches certain performance claims made by the supplier.

A minimum set of critical parameters are reported by participating SSL luminaire suppliers to accurately reflect the performance of their products. Scheme participants provide test reports or other evidence to Lighting Council Australia verifying their claims. Lighting Council Australia registers the product on a database on its website (www.lightingcouncil.com.au) and authorises use of a label owned by Lighting Council indicating conformance to the parameters.

Note: Only members of Lighting Council Australia are eligible to participate in the SSL Quality Scheme. All Lighting Council Australia members are signatories to a Code of Conduct which requires them to only supply lighting products that conform to all Australian regulatory requirements

Scheme Type

- ☐ Product Management Systems Certification
- ☐ Product Inspection Services
- ☒ Product Certification
- ☐ Product Testing and Sampling Services

Scheme Features

- Provides confidence to the market that products carrying the Scheme's label conform to the claims made about them in critical performance areas.
- The following critical parameters are verified and appear on the SSL Quality Scheme Label:
 - Luminaire efficacy
 - Light output of the luminaire
 - Measured input power
 - Correlated colour temperature
 - Colour rendering index

Fire Safety Services

Products Covered

- Fire protection equipment
- Fire detection & alarm system equipment
- Fire sprinkler system equipment
- Hydrant system equipment
- Fixed fire extinguishing systems
- Portable fire extinguishers

Introduction

There are numerous Registered Testing Authorities, conformity assessment schemes, JAS–ANZ accredited conformity assessment bodies, professional and appropriately qualified engineers and other legitimate bodies operating both in Australia and internationally in relation to providing evidence of product suitability regarding fire protection products. Each of these bodies has varying parameters associated with how they assess a product.

National Construction Code (NCC) Conformance

- ☒ Volume One
- ☒ Volume Two
- ☒ Volume Three
- ☐ N/A

Industry Schemes and Guides for Conformity Assessment

Product Conformity Guidance

- Fire Protection Association Australia

Product Certification Schemes

- ActivFire Scheme
- FirePass Product Listing Scheme

Fire Safety Services

Fire Protection Association Australia

FPA Australia is the peak technical and educational fire safety organisation in Australia and a national not-for-profit organisation. FPA Australia members design, manufacture, supply, install, commission, inspect, test, certify and maintain fire protection systems and equipment.

www.fpaa.com.au



Product Conformity Guidance

FPA Australia does not currently operate a conformance assessment scheme or any product approval or evaluation processes. However, FPA Australia has invested in providing information and advice to its members and the wider construction industry in relation to obtaining evidence of suitability in the fire protection sector.

This advice is based on applying the compliance pathways available under current legislation and focused on ensuring product is fit for purpose.

This information is provided in the form of technical documents which are available on FPA Australia's website.

FPA Australia advocates the following in relation to product compliance and evidence of suitability for fire protection products used in Australia.

1. Ensure legislation and minimum safety standards are achieved by ensuring products are "fit for the purpose for which they are intended".
2. Testing to relevant Mandatory Standards, Australian Standards or equivalent or more onerous international standards is critical to demonstrating product performance.
3. Products should only be certified if tested in accordance with point 2 above, or if the product only varies to a minor degree from a product that has been tested, where this variation is specifically assessed and documented.
4. Products for use in Australia should be tested or certified by a person or organisation able to demonstrate both product specific technical capacity and testing or certification competence relevant to the product being assessed. Such capacity and competence should be able to be independently confirmed.
5. Documentation provided as evidence of product compliance, should clearly and transparently indicate what recognised compliance pathway has been adopted and what specific performance criteria the product meets or exceeds, including any associated conditions.
6. Products must be demonstrated to be suitable for Australian conditions.

Scheme or Guide Type

- ☐ Product Management Systems Certification
- ☐ Product Inspection Services
- ☐ Product Certification
- ☐ Product Testing and Sampling Services

Scheme or Guide Features

Not applicable

Fire Safety Services

ActivFire® Scheme

Commonwealth Scientific and Industrial Research Organisation
(CSIRO) Infrastructure Technologies | Verification Services

www.csiro.au | www.ActivFire.gov.au



Registered Accreditation Number

Not applicable

Scope of Scheme

The CSIRO ActivFire® Register of Fire Protection Equipment includes certified products, for which evidence of conformance to relevant Australian/International Standards and technical specifications has been independently verified and validated.

CSIRO's ActivFire® Scheme for product certification and listing of active fire protection products and equipment verifies the conformity (compliance) of equipment through physical testing and technical verification based upon relevant and endorsed Australian/International standards and technical specifications.

Products are registered by CSIRO's ActivFire® Scheme according to the source or process from which they have been verified for conformity, including the following.

1. 'Certified Product Approval' (CPA); product certification by verification that the requirements of relevant product standards or technical specifications have been met, based upon evidence of conformity issued by a Recognised Conformity Evaluation Agency (e.g. NATA accredited) and validated by a Certificate of Conformity.
2. 'Recognised Product Approval' (RPA); product certification by verification that the requirements of relevant product standards or technical specifications have been met, based upon recognition and evidence of conformity issued by another Recognised Conformity Assessment Body (e.g. LPCB, UL, VdS etc.) and validated by a Certificate of Conformity.

Product certifications, certificates of conformity and details of designated suppliers are published as a Register of Fire Protection Equipment available as a database, documents and content on the ActivFire® website (<http://www.ActivFire.gov.au>). The Register is a nationally recognised source of "Evidence of suitability" for the purposes of the NCC.

CSIRO's ActivFire® product certification program is also recognised and referenced in the following.

1. A number of Australian product standards for products and fire protection system design and installation.
2. Australian Government, Department of Defence, MFPE 2011 Manual Of Fire Protection Engineering

Scheme Type

- | | |
|---|---|
| <input type="checkbox"/> Product Management Systems Certification | <input checked="" type="checkbox"/> Product Certification |
| <input checked="" type="checkbox"/> Product Inspection Services | <input checked="" type="checkbox"/> Product Testing and Sampling Services |

Scheme Features

- Evidence based verification of conformity for active fire protection products and equipment.
- Third party independence supported by the technical and laboratory resources of CSIRO.
- National and international framework for recognition of evaluation (testing agencies) and other conformity assessment bodies.
- Through the ActivFire® web site, the certification status of a products can be verified on-line, including access and download of current Certificates of Conformity
- ActivFire® verifies and validates agents/distributors of certified products

Fire Safety Services

FirePass Product Listing Scheme

Commonwealth Scientific and Industrial Research Organisation (CSIRO)
Infrastructure Technologies | Fire Testing & Assessments

<http://www.csiro.au/en/Do-business/Services/Testing-and-technical-services/Materials-infrastructure/Fire-pass-scheme>



Registered Accreditation Number

NATA Accreditation No. 165; Site No. 3625

Scope of Scheme

The Fire Pass Product Listing Scheme provides online access to selected fire Test Certificates and Assessment Reports prepared by Infrastructure Technologies, Fire Science laboratories. It allows members of the public, certifiers, architects, building professionals and building owners to validate the fire safety conformity of testing documentation in accordance the NCC or International Standards.

Clients who have successfully completed fire testing of their products, components or systems in our laboratories can apply to have their certificates and reports published on the CSIRO Fire Pass Product Listing website as members of the scheme. The certificates can be browsed, downloaded or printed for reference.

Scheme Type

- ☐ Product Management Systems Certification
- ☐ Product Inspection Services
- ☒ Product Certification
- ☐ Product Testing and Sampling Services

Scheme Features

- Evidence based verification of conformity for active fire protection products and equipment.
- Third party independence supported by the technical and laboratory resources of CSIRO.
- National and international framework for recognition of evaluation (testing agencies) and other conformity assessment bodies.
- Through the ActivFire® web site, the certification status of a products can be verified on-line, including access and download of current Certificates of Conformity
- ActivFire® verifies and validates agents/distributors of certified products

Plumbing Products

Products Covered

- Plumbing and drainage products

Introduction

State and Territory plumbing legislation references the Plumbing Code of Australia (PCA), which is published as Volume Three of the National Construction Code, or makes direct reference to the *AS/NZS 3500 – Plumbing and Drainage Series*, giving legal effect to the requirements of that standard as the minimum product requirements.

The PCA sets out the technical standards for how to undertake plumbing and drainage work, and makes reference to the product standards associated with that work.

The PCA sets out that certain plumbing or drainage installations must be certified and authorised. Product certification and authorisation must also comply with the procedures set out in Part G1 of the PCA (the WaterMark Certification Scheme). Plumbing products must meet the requirements of the scheme, and plumbers should refuse to install products that do not carry the WaterMark.

Where a material or product is exempted from certification under the PCA, it can be authorised for use:

- if it is certified as complying with the appropriate Australian Standard(s).

or

- if an appropriate Australian Standard does not exist, other evidence of suitability is provided in accordance with A2.2 of the PCA.

Furthermore, certain materials or products can be authorised for use if they are certified by a recognised body as complying with the relevant Australian Standard(s) for the specific application.

National Construction Code (NCC) Conformance

☐ Volume One

☐ Volume Two

☒ Volume Three

☐ N/A

Schemes and Guides for Conformity Assessment

Product Conformity Schemes

- WaterMark

Plumbing Products

WaterMark

www.abcb.gov.au



Registered Accreditation Number

Not applicable

Scope of Scheme

The WaterMark Certification Scheme is a mandatory certification scheme for plumbing and drainage products to ensure that plumbing and drainage materials and products are fit for purpose and appropriately authorised for use in plumbing installations.

The Plumbing Code of Australia requires certain plumbing and drainage materials and products to be certified and authorised for use in a plumbing or drainage installation. These materials and products are to be certified through the WaterMark Certification Scheme and listed on the WaterMark Product Database.

In order to achieve Watermark Certification, the subject material or product must:

- be tested by a recognised testing laboratory;
- comply with an approved specification (either a relevant existing standard or an approved WaterMark Technical Specification);
- be manufactured in accordance with an approved Quality Assurance Program; and
- carry a warranty.

Materials and products complying fully with the applicable requirements of the WaterMark Certification Scheme are then eligible to be certified by a WaterMark Conformity Assessment Body (WMCAB) and listed on the WaterMark Product Database.

Certified materials and products are identifiable by the WaterMark trademark, which must be displayed on the material or product upon the granting of a WaterMark Certificate of Conformity.

The WaterMark Certification Scheme provides a nationally consistent, risk based certification scheme for ensuring the quality of certain materials and products used in plumbing and drainage installations.

A comprehensive listing — including product types and application, specifications and exemptions — of predetermined materials and product types is contained on the WaterMark Schedule of Specifications. The ABCB will keep the WaterMark Schedule of Specifications updated as new specifications are approved and old specifications removed. Likewise, the List of Exempt Products lists predetermined materials and products that are not required to be certified under the WaterMark Certification Scheme.

Materials or products not listed on the WaterMark Schedule of Specifications or List of Exempt Products which are proposed to be used in plumbing or drainage installations require risk evaluation in accordance with ABCB *Manual for the Assessment of Risks of Plumbing Products*.

One of the approved WMCABs can provide a review of the material and product to determine if WaterMark Certification is necessary.

WaterMark is currently the subject of review by the ABCB and changes may occur in the future to its operation.

Scheme Type

- | | |
|---|--|
| <input type="checkbox"/> Product Management Systems Certification | <input checked="" type="checkbox"/> Product Certification |
| <input type="checkbox"/> Product Inspection Services | <input type="checkbox"/> Product Testing and Sampling Services |

Scheme Features

- A template for nationally consistent, plumbing and drainage products aimed to increase consumer safety
- A national certification scheme where all suppliers of certain types of plumbing and drainage products must obtain certification to permit the products use.
- Risk-based classification of plumbing and drainage products into three levels

Insulation Products

Products Covered

- Insulated sandwich panels
- Thermal insulation

Introduction

There are a broad range of insulation products and materials available for use in Australia. Insulation products can be used internally to provide insulation to meet required building standards as a discrete building element, or they may be manufactured as a combined product system which includes the insulation element in combination with another building element, such as external cladding materials.

There are many Registered Testing Authorities, conformity assessment schemes and JAS-ANZ accredited certification bodies who are appropriately qualified to undertake testing and provide evidence of suitability in accordance with the National Construction Code for insulation products. Each of these bodies has varying parameters associated with how they assess a product.

National Construction Code (NCC) Conformance

- ☒ Volume One
- ☒ Volume Two
- ☒ Volume Three
- ☐ N/A

Industry Schemes and Guides for Conformity Assessment

Product Conformity Guidance and Schemes

- Insulated Panel Council Australasia Limited
- CODE – Insulated Panel Council Australasia Limited
- Insulation Australasia Member Compliance Program

Insulation Products

Insulated Panel Council Australasia Ltd



The Insulated Panel Council Australasia Ltd (IPCA) is the industry body for all manufacturers, installers and distributors of insulated sandwich panel products. IPCA Ltd. is a not for profit industry association and a third party certification body for the industry.

www.insulatedpanelcouncil.org

Product Conformity Guidance

Insulation sandwich panels can be used in a wide range of building and construction projects.

IPCA Ltd. provides the following guidance in relation to product compliance and evidence of suitability for insulated sandwich panel products used in Australia.

- Ensure legislation and minimum safety standards are achieved by ensuring products are “fit for the purpose for which they are intended”.
- Testing to relevant Mandatory Standards, Australian Standards or equivalent or more onerous international standards is required to demonstrate product performance and compliance.
- Products will only be certified if tested in accordance with point 2.
- Products for use in Australia should be tested or certified by an organisation able to demonstrate both product specific technical capacity and testing or certification competence relevant to the product being assessed e.g. BRANZ, CSIRO, etc.
- Documentation provided as evidence of product compliance should clearly and transparently indicate what recognised compliance pathway has been adopted and what specific performance criteria the product meets or exceeds.
- Products must be demonstrated to be tested to meet Australian regulations.

Scheme or Guide Type

- ☐ Product Management Systems Certification
- ☐ Product Inspection Services
- ☒ Product Certification
- ☐ Product Testing and Sampling Services

Scheme or Guide Features

Not applicable

Insulation Products

CODE

www.insulatedpanelcouncil.org



Registered Accreditation Number

Not applicable

Scope of Scheme or Guide

The IPCA Ltd. Code of Practice (the CODE) incorporating the IPCA Ltd. Panel Certification Scheme is a voluntary conformance assessment scheme including product approval and evaluation processes.

IPCA Ltd. has invested in providing information and advice to its members and the wider construction industry in relation to providing evidence of suitability of materials and installation.

This advice is based on applying the compliance pathways available under current legislation and focused on ensuring product is fit for purpose. This information is provided in the form of the CODE documents which are available on IPCA Ltd. website.

The objectives of the CODE are to:

- increase confidence in building structures using this material should a fire occur
- promote best practice in the design specification and approval for facilities using Insulated Sandwich Panel (ISP) and Expanded Polystyrene Fire Resistant (EPS-FR) Panel.
- establish minimum acceptable benchmarks for manufacturing and installation of ISP and EPS-FR Panel.
- promote strategies to address risks of fires.
- promote high levels of maintenance of facilities made of ISP and EPS-FR Panel.
- promote environmental and sustainability credentials for ISP and EPS-FR Panel.
- provide recognisable 'Code Branding Mark' to distinguish ISP and EPS-FR Panel compliant facilities

Scheme Type

☐ Product Management Systems Certification

☐ Product Certification

☒ Product Inspection Services

☐ Product Testing and Sampling Services

Scheme Features

- Labelling
- Certification to ensure compliance
- Exceeds the requirements of the NCC, i.e. Group 2 areas will be Group 1 + additional CODE measures
- Meet ISO 9705 with the additions noted in this CODE
- Provides an audit system
- Provides identification process for fire fighters

Insulation Products

Insulation Australasia

Insulation Australasia (IA) is a product agnostic industry association established to promote the pivotal role of thermal insulation in building energy efficiency.

www.insulationaustralasia.org



Registered Accreditation Number

Not applicable

Product Conformity Guidance

Underpinned by industry best-practice in product compliance and installation methods, Insulation Australasia membership is open to manufacturers, importers and installers. Members must substantiate that their products achieve compliance with the relevant Australian and New Zealand Standards and the National Construction Code (NCC).

The IA Guidelines represent a certification system related to member's products where specified requirements, rules and procedures apply. As the scheme owner, IA presents the Guidelines containing requirements on conformity assessment procedures including the selection, determination, review, and finally certification as the verification activity.

The minimum mandatory requirements that must be demonstrated by members are compliance with:

- AS/NZS 4859.1 including manufacturing requirements for
 - Statistical Sampling (suite of testing to relevant AS's)
 - Suppliers Quality Management System, and
- NCC including evidence of suitability such as
 - Report from a Registered Testing Authority
 - Certificate of Conformity
 - Certificate of Accreditation
 - Certificate from appropriately qualified person
 - Certificate from JAS-ANZ accredited Certification Body (CB)
 - Any other form of documentary evidence describing the properties and performance.

The majority of IA members obtain either:

- CodeMark Certification of their product(s); or
- Product Certification through an independently accredited third party organisation.

The development of the IA Guidelines, linked to independently accredited 3rd party organisations provides IA administrative control over the process while avoiding involvement in the assessment of products. Separation of these processes is aimed at the avoidance of potential conflicts of interest within Insulation Australasia whilst providing a well-defined independent framework for complaint handling.

Scheme or Guide Type

- | | |
|---|--|
| <input type="checkbox"/> Product Management Systems Certification | <input type="checkbox"/> Product Certification |
| <input checked="" type="checkbox"/> Product Inspection Services | <input type="checkbox"/> Product Testing and Sampling Services |

Scheme or Guide Features

- Ensures products from IA members are fully compliant with AS/NZS 4859.1
- Third party certification ensures independence and verifiable performance claims
- Provides design and building professionals, building surveyors and consumers with assurance of product compliance

Coating Products

Products Covered

- Powder Coatings, Paints and related organic and inorganic coatings
- Thermal metal sprayed coatings
- Factory applied powder coatings and in-situ sprayed coatings
- Anodising and Electroplating finishes

Introduction

In Australia, all coated products installed in buildings or other structures, are subject to varying levels of degradation largely due to the often unavoidable impacts of exposure to environmental influences such as UV sunlight and other corrosive atmospheres including salt water, industrial and tropical. The premature degradation of these building products can be avoided by ensuring the correct preparation and application of fit for purpose coatings/ finishes that allows the finished item to perform to its specified service life.

The achievement of the intended service life of the coating/ finish product is dependent on it being applied in a proper and appropriate manner including a high standard of surface preparation.

There are a number of industry operated schemes that have been established to provide the market with certainty about the conformance of coating systems. These schemes are operated in conjunction with schemes for installers and contractors to offer a comprehensive compliance pathway.

National Construction Code (NCC) Conformance

- ☐ Volume One
- ☐ Volume Two
- ☐ Volume Three
- ☒ N/A

Industry Schemes and Guides for Conformity Assessment

Product Conformity Schemes

- Australian Paint Approval Scheme (APAS)
- Qualicoat Specificatio

Coating Products

Australian Paint Approval Scheme

www.apas.gov.au



Registered Accreditation Number

Not applicable

Scope of Scheme

Established in 1946 as the Commonwealth Paint Committee (CPC – later the Government Paint Committee GPC), the Australian Paint Approval Scheme is operated by the Commonwealth Science and Industrial Research Organisation (CSIRO). The APAS certifies paint products as complying with certain minimum performance criteria appropriate to the product type.

In addition, manufacturers of APAS certified products are required to have ISO 9001 accreditation and to participate in some form of proficiency testing program to demonstrate technical competence. They are also required to pass regular APAS audits for their manufacturing practices to ensure they comply with industry best practice standards.

Although participation in APAS is voluntary, many public sector departments and instrumentalities require APAS certification of paint products as part of their tender requirements.

The scope of APAS covers paint products in the heavy duty industrial coatings area as well as commercial/residential sector.

Scheme Type

- ☒ Product Management Systems Certification
- ☐ Product Inspection Services
- ☒ Product Certification
- ☐ Product Testing and Sampling Services

Scheme Features

- Based where possible on AS performance standards with additional requirements where appropriate
- Pre-qualification of products to prevent premature corrosion and resulting high maintenance or replacement costs.
- ISO 9001 accreditation is mandatory. NATA accreditation of laboratories is the preferred status.
- Incorporation of 3 key elements – industry best manufacturing practices, workplace health and safety, environmental
- International coverage – currently in 10 countries world wide

Coating Products

Qualicoat Specification

www.qualicoat.org.au

www.qualicoat.net



Registered Accreditation Number

NATA Accredited Inspection Agency No. 13539

Scope of Scheme

The Qualicoat Specification is an accreditation and performance criteria for powder coating of architectural aluminium products to meet AS3715 and AS2047 through independent NATA auditing.

Qualicoat outlines and approves the minimum criteria for the critical elements of powder application, including:

- pre-treatment
- plant
- powder
- process control
- testing

The Qualicoat Specification is administered by the Australasian Institute of Surface Finishing (AISF), the peak national body representing the surface finishing industries comprising all powder coating, anodising, electroplating and abrasive blasting stakeholders including applicators, coaters, finishers, suppliers, technical services and other participants.

The AISF is a not-for-profit entity and provides member accreditation services, technical coordination, skills development and apprenticeship/ training programs that support the continuous improvement of its members that ultimately benefits the end users of their goods and services.

The AISF promotes and supports the understanding of and complete compliance with Australian Standards, the Building Code of Australia and other best practice specification requirements to meet and surpass the performance criteria of all goods made in or for use in Australia.

The AISF's specialised specification and accreditation programs offer technical and operational guidelines to achieve tested, proven and audited performance specifications.

The Qualicoat Specification is supported by other programs operated by the AISF including the Accredited Powder Coater and Accredited Anodiser schemes for those using coating products.

The AISF works collaboratively with all stakeholders to promote the levels of specification criteria, technical competencies, selection of fit for purpose materials, process testing, independent auditing and best practice surface finishing principles critical to achieve compliance and performance satisfaction.

Scheme Type

☐ Product Management Systems Certification

☒ Product Certification

☒ Product Inspection Services

☒ Product Testing and Sampling Services

Scheme Features

links the competencies of the applicator, the performance of pre-treatment chemicals and the powders used for high performance powder coating of all architectural aluminium products used on windows and doors, building facades and trims, structures, etc

Building Products

Products Covered

- Building materials, forms of construction and designs

Introduction

State and Territory building legislation references the Building Code of Australia (BCA), which is published as Volume One and Volume Two of the National Construction Code, giving legal effect to the requirements of the BCA as minimum product requirements. The BCA provides a framework for product conformance by:

- setting out the relevant performance requirements for a building and its construction materials
- referencing relevant minimum technical standards for product performance
- identifying a range of methods for verification of performance of both a building and its construction materials.

The flexibility allowed under the performance-based BCA means that constructors are not locked in to a specific construction method and are able to achieve compliance in several ways. The BCA allows for both prescriptive and performance methods to achieve a building solution:

- Prescriptive Deemed-to-Satisfy Provisions, representing accepted technical compliance options for each Performance Requirement, are provided in the BCA. Volume One has Deemed-to-Satisfy Provisions and Volume Two has both 'Acceptable Construction Practice' (the technical information is specified in the BCA) or 'Acceptable Construction Manual' (generally includes reference to an Australian Standard) for the particular building element. Meeting the Deemed-to-Satisfy Provisions will guarantee compliance with the BCA performance requirements.
- If a design or element of a design does not meet the Deemed-to-Satisfy Provisions, it can still comply with the BCA if it can be demonstrated that the Alternative Solution complies with the relevant Performance Requirements via supportive evidence, which must be approved by the building surveyor or approving authority before work commences. The onus is then on the builder to ensure they have ordered and used products that conform to the BCA and to retain appropriate evidence of conformance.

The BCA sets out the types of evidence that are required to demonstrate that a product meets a Performance Requirement and may include one or a combination of the following.

- "A report issued by a Registered Testing Authority, showing that the material or form of construction has been submitted to the tests listed in the report, and setting out the results of those tests and any other relevant information that demonstrates its suitability for use in the building.
- A current Certificate of Conformity [CodeMark] or a current Certificate of Accreditation.
- A certificate from a professional engineer or other appropriately qualified person which:
- certifies that a material, design or form of construction complies with the requirements of the BCA
- sets out the basis on which it is given and the extent to which relevant specifications, rules, codes of practice or other publications have been relied upon.
- A current certificate issued by a product certification body that has been accredited by the Joint Accreditation System of Australia and New Zealand (JAS-ANZ).
- Any other form of documentary evidence that correctly describes the properties and performance of the material or form of construction and adequately demonstrates its suitability for use in the building."

The BCA does not specify exactly which type of evidence should be provided for any given building product.

Where building products rely on compliance with Deemed-to-Satisfy Provisions and referenced Australian Standards to demonstrate acceptable performance, these provisions and standards can prescribe the documentary evidence that must be provided to verify conformance.

National Construction Code (NCC) Conformance

- | | |
|--|---------------------------------------|
| <input checked="" type="checkbox"/> Volume One | <input type="checkbox"/> Volume Three |
| <input checked="" type="checkbox"/> Volume Two | <input type="checkbox"/> N/A |

Industry Schemes and Guides for Conformity Assessment

Product Conformity Schemes

- CodeMark

Building Products

CodeMark

www.abcb.gov.au



Registered Accreditation Number

Not applicable

Scope of Scheme

CodeMark is a voluntary building product certification scheme which supports the use of new and innovative building products by providing a nationally and internationally accepted process for products to be assessed for compliance with the requirements of the building codes of Australia and New Zealand. The scheme provides confidence and certainty to regulatory authorities and the market through the issue of a Certificate of Conformity.

The CodeMark Scheme covers any building material, method of construction or design. In Australia, it addresses compliance with the Building Code of Australia (BCA). In New Zealand it addresses compliance with the New Zealand Building Code (NZBC). The Australian Building Codes Board (ABCB) and New Zealand's Ministry of Business, Innovation and Employment (MBIE) manage the scheme in their respective countries.

The requirements for evaluation and certification of products are set out in the CodeMark Scheme Rules. Third-party CodeMark certification bodies evaluate and certify products to ensure they meet specified requirements of the two Building Codes. Any organisation that can satisfy an appropriate CodeMark certification body that its product meets these requirements can have its product CodeMark certified.

Designed to encourage innovation, CodeMark supports a performance-based approach to building construction and design.

A CodeMark Certificate of Conformity is one of several options available for meeting the 'Evidence of suitability' requirements of the BCA.

As the CodeMark Scheme is embedded within State and Territory building control legislation, obtaining a CodeMark Certificate of Conformity for a product or system is the only way to gain mandatory acceptance of product or system compliance with the BCA throughout Australia.

The CodeMark Scheme permits the use of the Certificate Number and CodeMark certification mark on a product or system listed in the respective Certificate of Conformity, providing evidence of compliance with the requirements of the BCA. CodeMark certified products are listed on the ABCB website as they become certified. CodeMark is currently the subject of review by the ABCB and changes may occur in the future to its operation.

Scheme Type

- | | |
|---|--|
| <input type="checkbox"/> Product Management Systems Certification | <input checked="" type="checkbox"/> Product Certification |
| <input type="checkbox"/> Product Inspection Services | <input type="checkbox"/> Product Testing and Sampling Services |

Scheme Features

- A trans-Tasman scheme that strengthens the entire building supply chain and gives users confidence that their building products comply with the BCA or the NZBC
- A national database of products that have been granted a CodeMark certification

This Guide was developed by the Construction Product Quality Working Group (CPQWG), on behalf of the Australasian Procurement and Construction Council (APCC). The 2013 working group comprised representatives from the following bodies:





