

MANAGE PROCUREMENT RISK
WITH A QUALITY SUPPLY CHAIN

RESOURCES



QUALITY
GUARANTEED

Processor Members

Our Processor Members must hold current JASANZ accredited 3rd party **processor** certificates to guarantee their bar and mesh conforms to AS/NZS 4671 and other design Standards.

FULL MEMBERS > 10 years of membership



ORDINARY MEMBERS < 10 years of membership



Scan the QR code to download Processor 3rd party certificates at sria.com.au

Mill Member



Our Australian Mill Member must hold a current JASANZ accredited 3rd party **mill** certificate to guarantee their steel rod and bar conforms to AS/NZS 4671.



Associate Members – Accessories and Machinery Suppliers

Our 24 Associate Members are established Australian and International businesses who supply quality **building accessories, machinery, software** and **steel reinforcing feed materials** to our Processor Members.

Available at sria.com.au



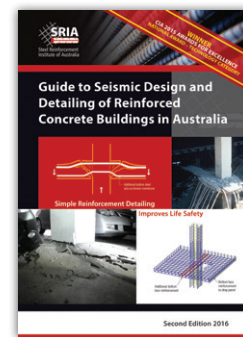
BUILD SUSTAINABLY with the Guide to Historical Steel Reinforcement in Australia

This award-winning Guide is an ESSENTIAL RESOURCE to adapt and repurpose older concrete structures. The 2-volume hardcover boxed set contains all relevant information on steel reinforcement, concrete, Standards, detailing and construction practices since 1895.



FREE TOOLS

Bar and Mesh Gauges to measure the diameter of steel for conformance to AS/NZS 4671.



Publications

Written by experts in design and construction, SRIA publications are used by Engineers, Architects, Builders and Government.



Technical Notes and Support

Technical notes and a comprehensive technical advice service are available to the construction industry on the design and use of reinforcing steel in concrete.

For further information contact the Steel Reinforcement Institute of Australia:

Executive Director/CEO: **Scott Munter**

t 02 9144 2602

National Engineer: **Eric Lume**

e info@sria.com.au

w sria.com.au

Pymble Corporate Centre, Level 3, Building 2, 20 Bridge Street, Pymble NSW 2073 Australia

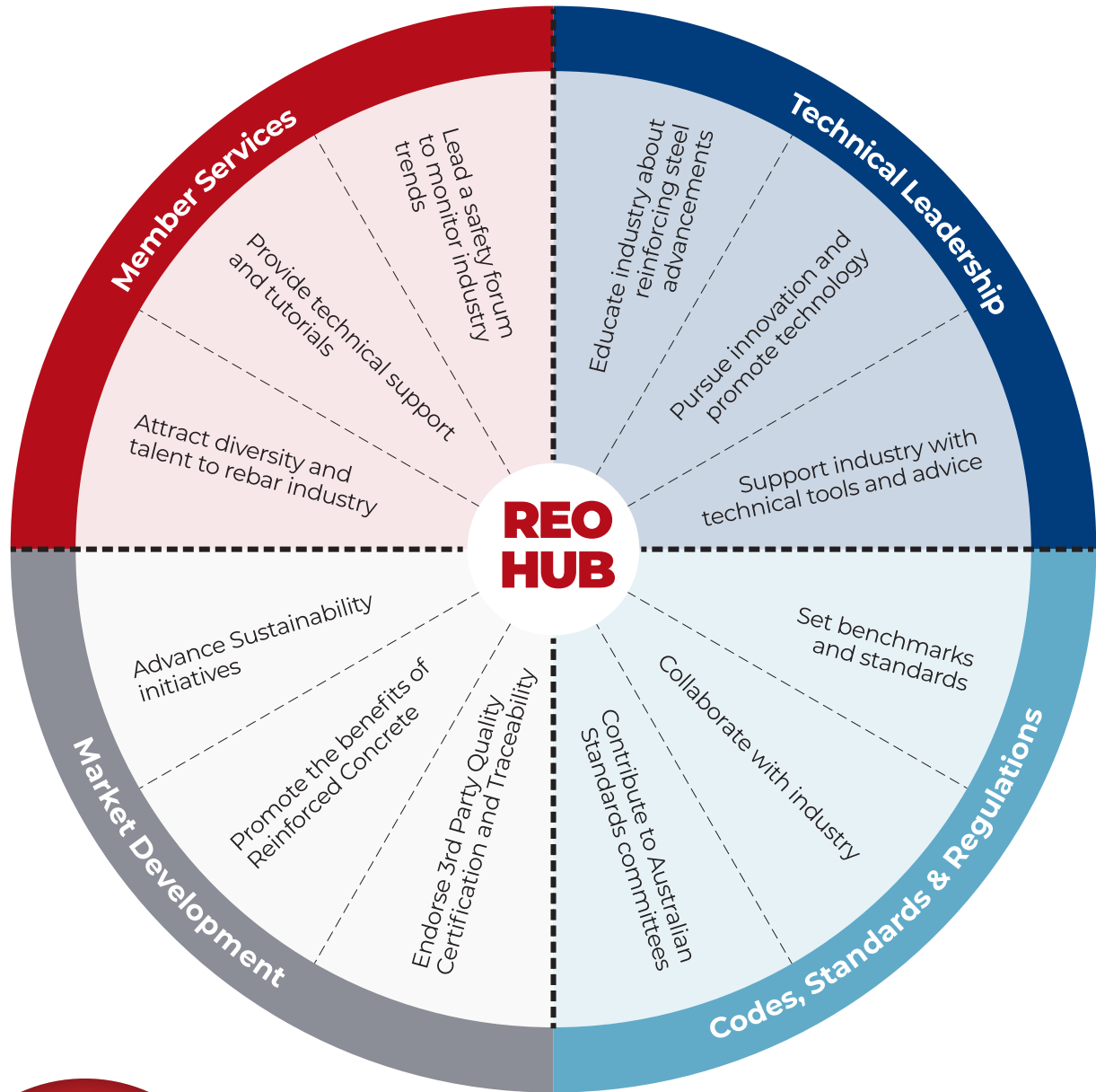
Follow us: [f facebook.com/steelreinforcementinstitute](https://www.facebook.com/steelreinforcementinstitute) [in linkedin.com/company/sria](https://www.linkedin.com/company/sria)



THE HUB FOR STEEL REINFORCEMENT KNOWLEDGE AND SUPPORT

The Steel Reinforcement Institute of Australia (SRIA) supports reinforcing steel quality and capability in Australia's building and construction industry.

Since 1988, the not-for-profit institute has been providing technical leadership and support to Engineers, Designers, Builders, Suppliers, Specifiers and Students interested in understanding the benefits and applications of reinforcing steel in concrete.



LOOK FOR THE SRIA LOGO

It's your guarantee of quality.

Our members make Australia's building industry **transparent, safe and sustainable** through:



Quality and Traceability

✓ 3rd PARTY PROCESSOR CERTIFICATION to verify supply chain and guarantee bar and mesh conform to Australian Standards.



Workplace Health and Safety

✓ Member safety statistics are REPORTED for BENCHMARKING and CONTINUOUS IMPROVEMENT by the National Safety Group.



Australian Manufacturing and Jobs

✓ Over 5,000 Australians providing EXCEPTIONAL CUSTOMER SERVICE at 100 locations.



Sustainability

✓ COMPUTER MODELLING to identify material clashes, buildability issues, and optimal steel fixing sequencing.
✓ Reinforcement manufactured using RECYCLED SCRAP STEEL as part of a circular economy.